



FY 2017 Annual Report

July 2016 — June 2017

GNR VISION

A healthy, protected, and prepared community.

GNR MISSION

To protect and improve the health of our community by monitoring and preventing disease; promoting health and well being; and preparing for disasters.

GNR VALUES

- Availability: We will be available to our clients through emergency preparedness services, disease and outbreak investigations, expanded hours and readily available services.
- Affability: We will work to ensure our clients have a good experience at our clinics. We will treat clients, coworkers, partners, and others in our community with respect. We will value our employees.
- Ability: We will work toward a high level competency in all areas of service.
- Accountability: We will be good stewards of the funds and materials we receive.
- Adaptability: We will always look forward to meet the current and future needs of our community.

Gwinnett Board of Health

Louise Radloff, Chair

Mike Mason, Vice Chair
Mayor, Peachtree Corners

Earl Alwin Grubbs, M.D.

Joy Monroe

Alan Bier, M.D.

Charlotte Nash
Chairman, Gwinnett County
Board of Commissioners

Alvin Wilbanks
Superintendent, Gwinnett Co.
Public Schools

Newton Board of Health

Henry Patton, M.D., Chair

Phillip Stone, Vice Chair

Louise Adams

Liz Pope

Marcello Banes
Chairman, Newton County
Board of Commissioners

Samantha Fuhrey
Superintendent, Newton
County Schools

Ronnie Johnston
Mayor, Covington

Rockdale Board of Health

Shiroleen Adams-Hurt, Chair

Allan Jones, Vice Chair

Dr. Gayla Dillard

Jacob Bailey

Oz Nesbitt
Chairman, Rockdale County
Board of Commissioners

Richard Autry
Superintendent, Rockdale
County Schools

Gene Wilson
Chief of Police

A Message From the Director



To our Partners in Public Health,

The Health Department, Georgia Department of Public Health and local community partners are committed to protecting and improving the health of the residents in our counties.

To carry out our mission, the Health Department is responsible for providing important core public health functions and essential services.

This years' annual report addresses the essential services provided to the community by the Gwinnett, Newton & Rockdale County Health Departments (GNR).

While the health department is known for it's traditional services, our greatest opportunities lie in services such as emergency response and preparedness, community education, and linking with partners to work on health issues in our communities.

Please see our website (www.gnrhealth.com) to review our Community Health Assessments (CHA) and Community Health Improvement plans (CHIP).

We would also love to hear from you! Visit the "Contact Us" page on the GNR website to send us feedback.

We look forward to your partnership and are excited to present our fiscal year 2017 Annual Report.

Sincerely,
Lloyd M. Hofer, MD, MPH
Health Director

TABLE OF CONTENTS

GNR Vision & Mission	1
Message from Dr. Hofer	2
Key Moments	3
National Accreditation	4
Demographics	5
Demographics Continued	6
GNR Clinics	7
Leading Causes of Death	8
Programs & Services	9
Immunizations	10
Women's Health	11
WIC	12
Emergency Preparedness	13
Environmental Health	14
Epidemiology	15
Epidemiology Data	16
Performance Management	17
Breast/Cervical Cancer Program ...	18
Adolescent Health	19
Children's First	20
Children's Medical Services	21
Early Hearing Program	22

Key Moments

Recognition



The Gwinnett, Newton & Rockdale County Health Department (GNR) Notifiable Disease Epidemiology Team won the **Sellers-McCroan Award**, at the Georgia Public Health Association Conference (GPHA).

GNR's Dental Program won the **Dental Merit Award** at the Georgia Public Health Association.



Social Media Marketing—Zika Educational Advertisements

Targeted individuals in the GNR District who were:

- English and Spanish Speakers
- Interested in international travel
- Interested in pregnancy related topics

Results

Facebook

Reached **45,000+** Spanish speakers

Reached **41,000+** English speakers

Twitter

Seen **201,942** times by Spanish speakers

Seen **313,838** times by English speakers

GNR Social Media



/GNRHD



/GNRHealth



/GNRHealth



National Accreditation

We are pleased to announce the attainment of national accreditation through the Public Health Accreditation Board (PHAB) recognized on August 17, 2016. With this accreditation, the Gwinnett, Newton and Rockdale County Health Departments have undergone a rigorous peer-reviewed assessment process, meeting or exceeding numerous quality and performance standards as determined by PHAB.



"This accreditation honors our entire community and recognizes our ability to collaboratively address health issues of our time," said the Health Director, Lloyd Hofer, M.D., M.P.H. "We are grateful for our dedicated staff and willing partners as we continue to work diligently toward a healthy, protected, and prepared community."

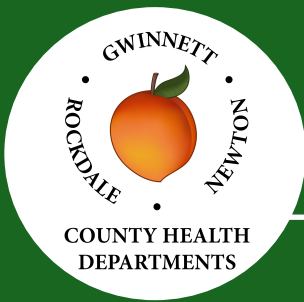
"Achieving PHAB accreditation means that the methods in which we provide programs and services were reviewed by peers in public health and met national standards," said Tara Echols, M.B.A., who coordinated the health department's accreditation efforts. "It demonstrates our commitment to quality improvement and community engagement."

The Public Health Accreditation Board (PHAB) is a nonprofit organization dedicated to improving and protecting the health of the public by advancing and ultimately transforming the quality and performance of public health departments. PHAB is jointly supported by the Centers for Disease Control (CDC) and the Robert Wood Johnson Foundation, a national nonprofit organization dedicated to improving health and healthcare for all Americans. PHAB has awarded accreditation to 151 public health agencies across the United States including two other health districts in Georgia.

The PHAB standards are based on the Ten Essential Public Health Services as set forth by the CDC and the National Public Health Performance Standards Program. These essential services include:

- Monitor health status to identify and solve community health problems.
- Diagnose and investigate health problems and health hazards in the community.
- Inform, educate, and empower people about health issues.
- Mobilize community partnerships and action to identify and solve health problems.
- Develop policies and plans that support individual and community health efforts.
- Enforce laws and regulations that protect health and ensure safety.
- Link people to needed personal health services and assure the provision of health care when otherwise unavailable.
- Assure competent public and personal health care workforce.
- Evaluate effectiveness, accessibility, and quality of personal and population based health services.
- Research for new insights and innovative solutions to health problems.



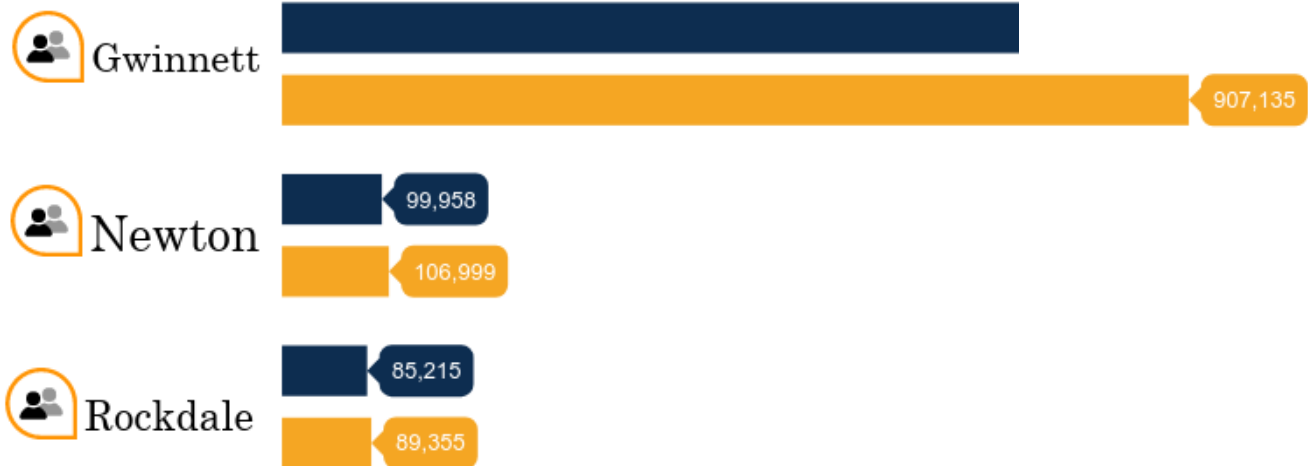


Gwinnett, Newton & Rockdale County DEMOGRAPHICS

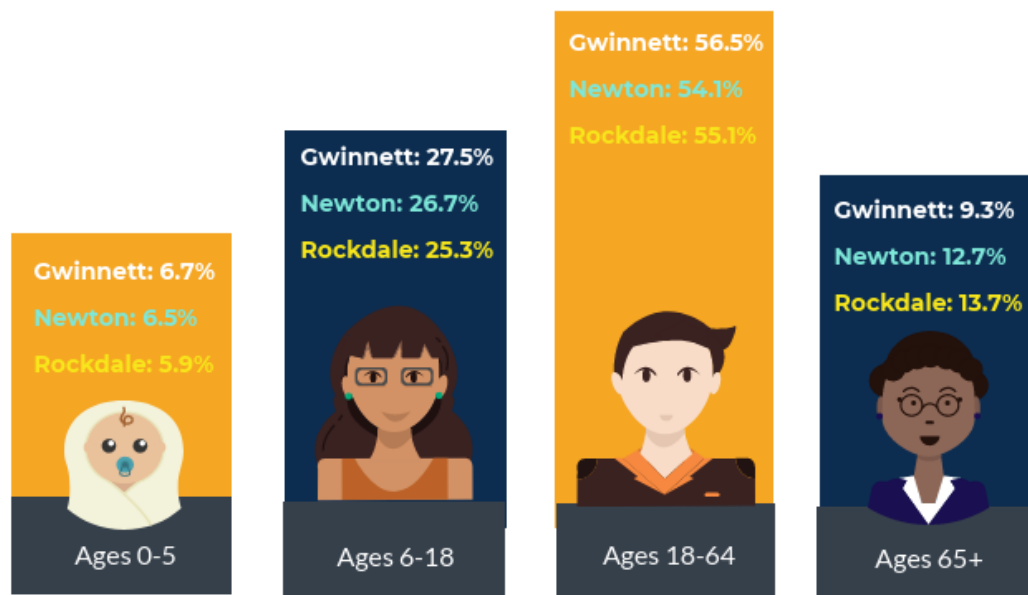
Source: U.S. Census

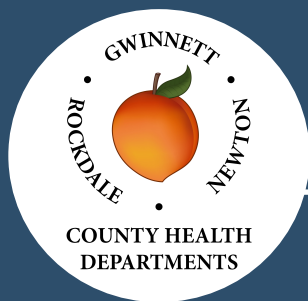
GNR Population Data by County

■ 2010 ■ 2016



GNR Population by Age (2016)



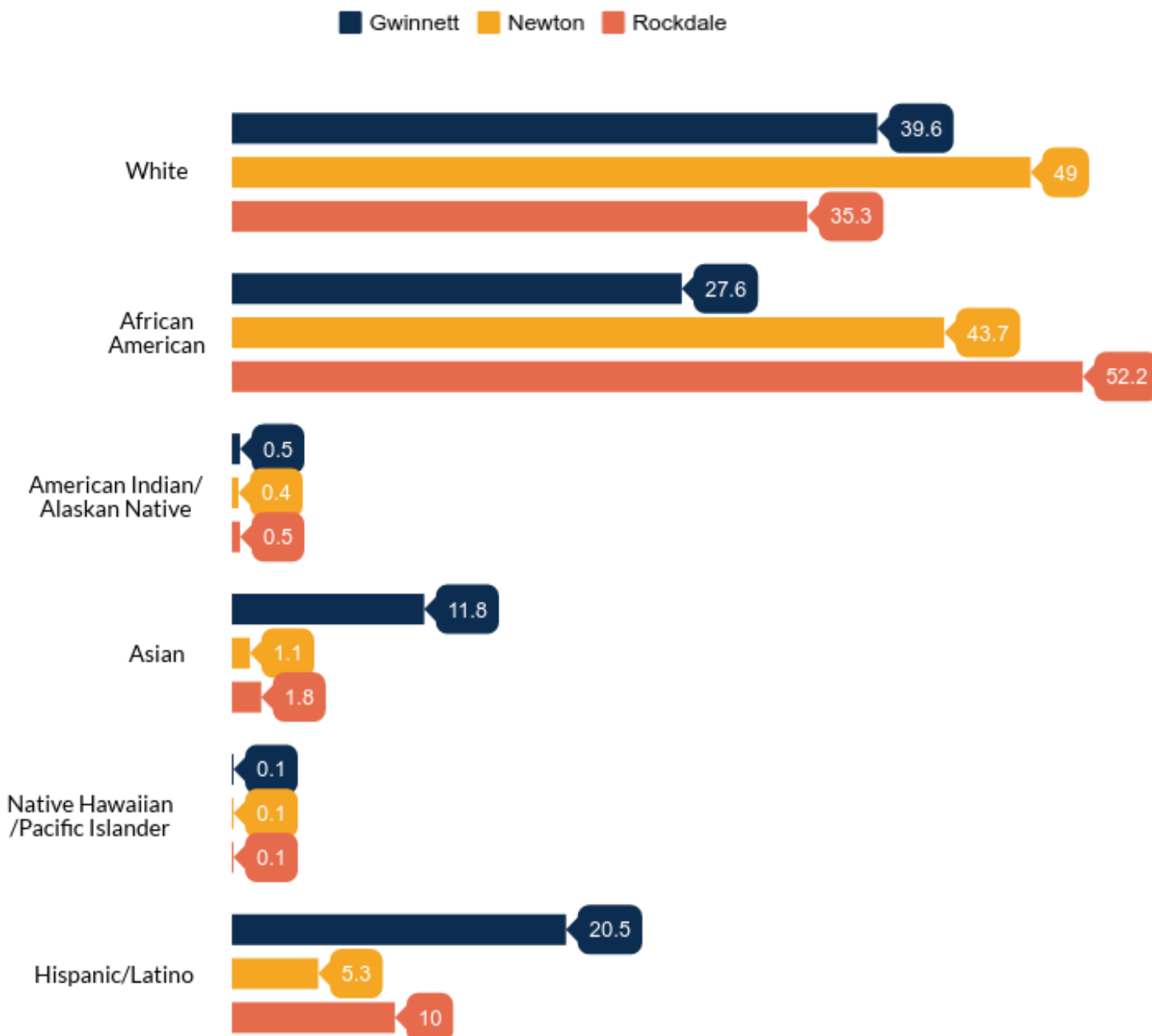


Gwinnett, Newton & Rockdale County

DEMOGRAPHICS

Source: U.S. Census

GNR Race / Ethnicity by County (2016)



GNR Clinics



District Office
GNR County Health Departments
 2570 Riverside Parkway
 Lawrenceville, GA 30046



Adolescent Health Program
 Meadowcreek High School
 4455 Steve Reynolds Blvd.
 Norcross, GA 30092
Total participants FY 2017: 3,346



Buford Health Center
 2755 Sawnee Ave.
 Buford, GA 30518
*Total patient visits FY 2017: 16,698**
**Closed from Jan 2017—July 2017 for renovations*



Lawrenceville Health Center
 455 Grayson Hwy., #300
 Lawrenceville, GA 30046
Total patient visits FY 2017: 60,782



Lilburn Square WIC Clinic
 5342 Lawrenceville Hwy.
 Lilburn, GA 30047
Total patient visits FY 2017: 7,800



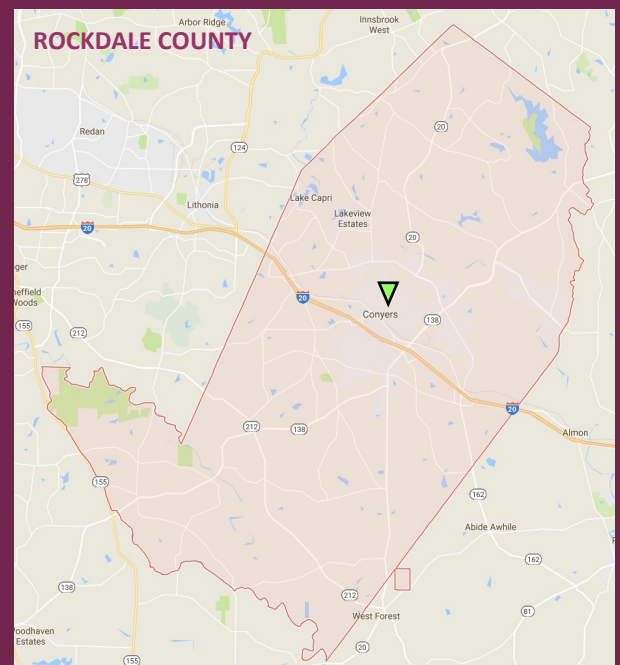
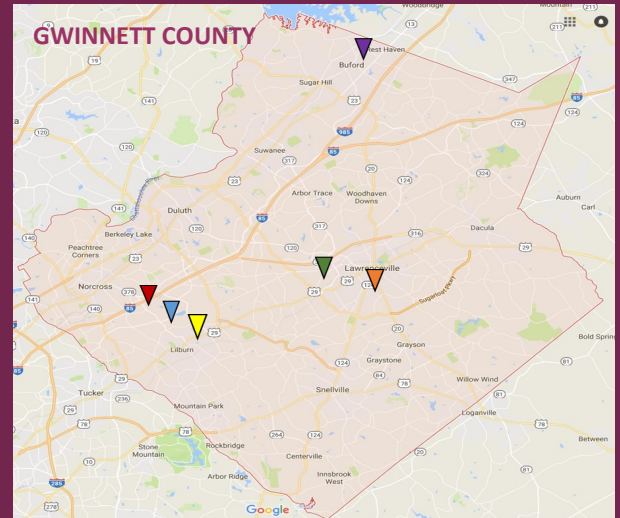
Norcross Health Center
 5030 Georgia Belle Court
 Norcross, GA 30093
Total patient visits FY 2017: 70,311



Newton County Health Center
 8203 Hazelbrand Road
 Covington, GA 30014
Total patient visits FY 2017: 26,168



Rockdale County Health Center
 985 Taylor Street
 Conyers, GA 30012
Total patient visits FY 2017: 22,898



Leading Causes of Death, GNR (2012-2016)

Gwinnett County

1. Ischemic Heart and Vascular Disease
2. All Other Mental and Behavioral Disorders
3. Cerebrovascular Disease
4. Malignant Neoplasms of the Trachea, Bronchus, and Lung
5. All Chronic Obstruction Pulmonary Disease (COPD) Except Asthma
6. Alzheimer's Disease
7. Hypertension and Hypertensive Renal, and Heart Disease
8. Diabetes Mellitus
9. Intentional Self-Harm
10. Nephritis, Nephrotic Syndrome and Nephrosis

Rockdale County

1. Ischemic Heart and Vascular Disease
2. All Other Mental and Behavioral Disorders
3. Cerebrovascular Disease
4. All COPD Except Asthma
5. Malignant Neoplasms of the Trachea, Bronchus, and Lung
6. Diabetes Mellitus
7. Hypertension and Hypertensive Renal, and Heart Disease
8. Alzheimer's Disease
9. Nephritis, Nephrotic Syndrome and Nephrosis
10. Malignant Neoplasm of the Breast

Newton County

1. Ischemic Heart and Vascular Disease
2. Malignant Neoplasms of the Trachea, Bronchus, and Lung
3. All Other Mental and Behavioral Disorders
4. All Chronic Obstruction Pulmonary Disease (COPD) Except Asthma
5. Cerebrovascular Disease
6. Hypertension and Hypertensive Renal, and Heart Disease
7. Diabetes Mellitus
8. Alzheimer's Disease
9. Nephritis, Nephrotic Syndrome and Nephrosis
10. Motor Vehicle Crashes



Public Health Programs & Services

Gwinnett, Newton & Rockdale County Health Departments (GNR) provide services to all residents in the community through multiple programs offered at six health centers, three environmental health offices, and the district administration office.

Child and Adolescent Health

- Child Immunizations
- Women, Infants, and Children (WIC)
- Child Dental Care
- Children Health Check Exams
- Children First
- School Screenings
- Teen Services

Travel Immunizations

Adult Immunizations

STD Testing, Treatment and Follow-up

Tuberculosis Testing and Treatment

Disease Testing and Counseling

Environmental Health Services*

Refugee Health

** Services available at select locations*

Adult and Family Health

- Family Planning*
- DNA/Lab tests
- Pregnancy and Prenatal Related Services
- Nutrition Counseling
- Cancer Screenings
- Mammogram/Services for Women over 40*

Keeping Communities Healthy and Safe



Immunizations

Purpose of the Program:

To immunize the public against vaccine preventable diseases, regulatory compliance of immunizations for children in childcare and school settings, and offer travel clinics as a part of pre-travel planning.



Patient visits also receiving immunizations by Center FY2017

Center	Total Visits *	Immunizations **
Buford	12,665	2,267
Lawrenceville	43,347	10,853
Newton	17,248	3,863
Norcross / Lilburn	57,380	9,992
Rockdale	16,765	4,048
Total	147,405	31,023

* Not including immunizations

**Given to patient on or after visit to another program

Immunization Certificate Audits by County 2016

Completed by Calendar Year

	Childcare Certificates	Kindergarten Certificates	7th Grade Certificates
Gwinnett	22,424	12,453	14,252
Newton	1,586	2,077	1,600
Rockdale	2,806	1,523	1,314
Total	26,816	16,053	17,166

Women's Health & Family Planning

Purpose of the Program:

The Family Planning and Women's Services Program provides accessible, affordable and high quality reproductive and cancer screening services to women of Gwinnett, Newton, and Rockdale County.

The goal of the Family Planning Program is to improve pregnancy planning and spacing, and prevent unintended pregnancies, resulting in healthier families.

What we do:

- Provide well-woman check-ups and cancer screenings for Breast & Cervical Cancer
- Provide effective contraceptive methods
- Provide counseling and education for breast and cervical cancer, contraceptives, etc.
- Test for Sexually Transmitted Diseases (STDs)
- Encourage vaccination of vaccine preventable diseases like HPV
- Refer for additional services, as needed

FY 2017 Unique Patients in the Family Planning Program

Gwinnett County

Lawrenceville
460

Norcross
787

Buford
310

Newton County

670

Rockdale County

503

Totals

2,730



Women, Infants, Children (WIC)

State WIC Office Mission:

The mission of Georgia Special Supplemental Nutrition Program for Women, Infants and Children (WIC) Program is to improve health outcomes and quality of life by providing nutritious food, nutrition education, including breastfeeding promotion and support, and referrals to health and other services.

What We Provide to Eligible Families:

- Personalized nutrition counseling
- Vouchers for healthy foods and nutritionals
- Information about healthy foods and lifestyle
- Breastfeeding education & support
- Referrals for other public health programs and assistance

Quick Facts

GNR WIC is the largest WIC program in Georgia with an average participation monthly of **25,204** monthly

Stand alone Lilburn WIC clinic has over **7,000** participants

Over **\$16 million** spent annually at WIC vendors (stores and supermarkets) in our district.

2016-2017 WIC Dietetic Internship Program

The Department of Public Health (DPH) WIC Dietetic Internship Program aims to improve health outcomes of Georgians through the promotion of quality nutrition care practice by assisting qualified DPH employees in their quest to become registered dietitians (RD).

GNR Health Departments had two graduates in August 2016:

Melissa Thomas and Erin Rennie



Pictured (L to R): Melissa Thomas (Nutritionist) and Erin Rennie (Nutritionist).

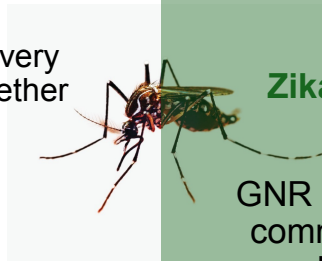
Emergency Preparedness (EP)

Purpose of the Program:

Planning and preparedness for, response to, and recovery from any disaster with a Public Health component, whether natural events, man-caused incidents (accidental or intentional) or disease epidemics.

What Emergency Preparedness does:

- Develop and maintain relationships with key community partners
- Monitor Public Health events and communicate effectively to public
- Work with local, state, federal, and private sector partners to assess community vulnerabilities and prepare response and mitigation plans to deal with them
- Maintain updated Emergency Operations Plan for the health district
- Conduct and participate in drills and exercises (both internal and with partners) to prepare for disaster response
- Assist in development of local Medical Reserve Corps volunteers
- Provide medical support for residents in evacuation shelters
- Assist with response for special needs and vulnerable populations
- Prepare to dispense emergency medication to all community residents in as little as 48 hours in the wake of a bio-terrorist attack
- Prepare for mass vaccination clinics



Responses in FY2017

Zika Virus Outbreak

GNR set up local incident command operations to coordinate with state and federal partners

Initiated local outreach

Responded to residents concerns on how to avoid Zika virus and its potential side affects

Hurricane Matthew Response

Initiated local incident command operations to coordinate hurricane response

Sent a Nursing Strike Team to assist in evacuation shelter operations in Savannah



GNR responds to Hurricane Matthew by sending nurses to Savannah, Georgia.

Environmental Health (EH)

Environmental Health (EH) Programs assess and control factors in the natural and built environment that can potentially affect health. This is primarily accomplished through education and regulation.

In local Public Health, EH is responsible for overseeing the following programs:

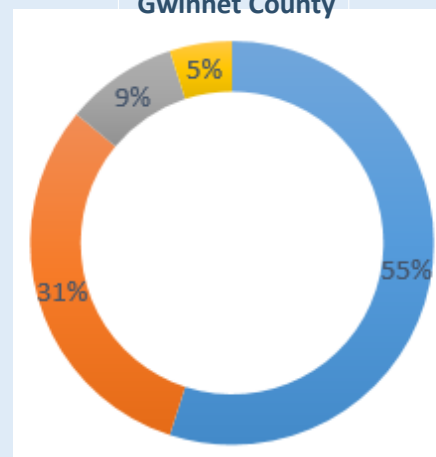
- Food Service
- Public Swimming Pools
- Tourist Accommodations
- Body Art
- Onsite Sewage Systems (septic systems)

In addition, EH regularly assists the Epidemiology Department in conducting investigations related to Norovirus, foodborne or waterborne outbreaks, unhealthy homes, and similar situations.

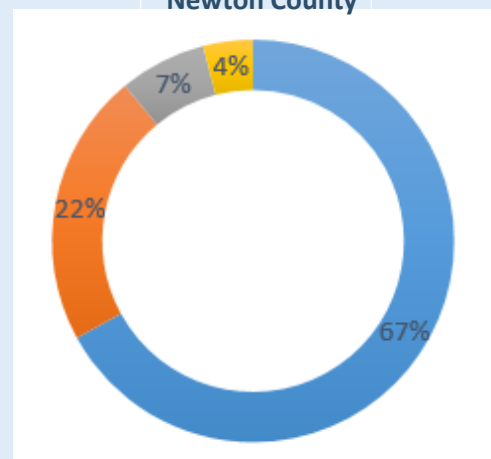
Restaurant Inspection Scores

■ A ■ B ■ C ■ D

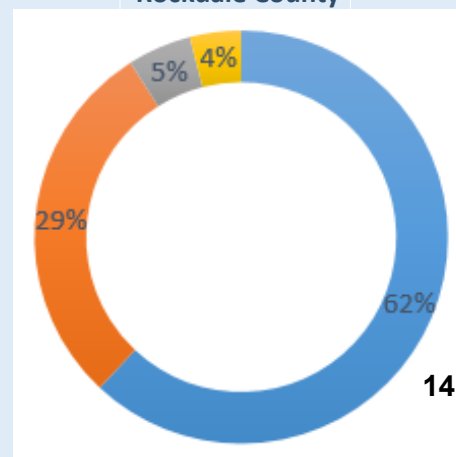
Gwinnet County



Newton County



Rockdale County



GNR Environmental Health Data

Tourist Attraction Inspections FY2017

Gwinnett	196
Newton	18
Rockdale	31

Restaurant Inspections FY2017

Gwinnett	6,827
Newton	477
Rockdale	582

Swimming Pool Inspections FY2017

Gwinnett	2,128
Newton & Rockdale *	286

Septic System Installations FY2017

Gwinnett	464
Newton	172
Rockdale	72

*Newton & Rockdale Swimming Pool data is calculated together.

Epidemiology

The Epidemiology and Infectious Disease Division (EPI) performs disease investigation, management, education, and prevention services. The EPI staff perform routine surveillance for over **70 notifiable diseases** and provide key disease prevention and control activities protecting the health of the community.

Key programmatic areas include: Notifiable Disease Epidemiology, Tuberculosis (TB), Sexually Transmitted Infection (STIs).

In addition to surveillance and control functions for notifiable diseases, GNR Epidemiology staff:

- Investigates reports of non-reportable diseases such as Norovirus, head lice, and scabies
- Completes data requests from community partners and the general population
- Participates in community health assessment and improvement planning
- Provides infection control guidance and trainings, and collaborates with community partners including schools, hospitals, daycares, skilled nursing facilities, etc. to control the spread of infectious diseases.
- Assists and provides field investigations as requested by the Georgia Department of Public Health and the CDC.



FY2017

By the Numbers

Epidemiology received reports of **2,431** general (non STD notifiable conditions and **1,693** animal bites.

99.9% of all required disease investigations were completed.

Epidemiology staff responded to **92** restaurant, hotel, or swimming pool complaints.

Tuberculosis staff investigated and treated **46** active tuberculosis cases.

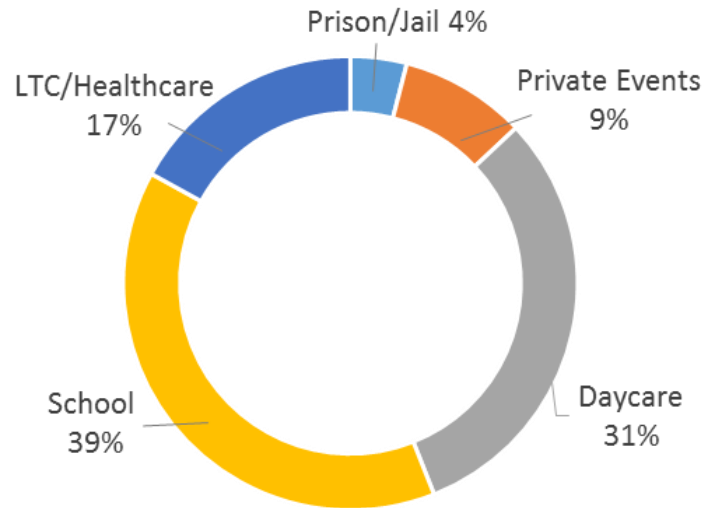
In 2016, Communicable Disease staff received reports of **7,079** sexually transmitted diseases.

In the first half of 2017, **2,645** sexually transmitted diseases were reported.

Epidemiology Data

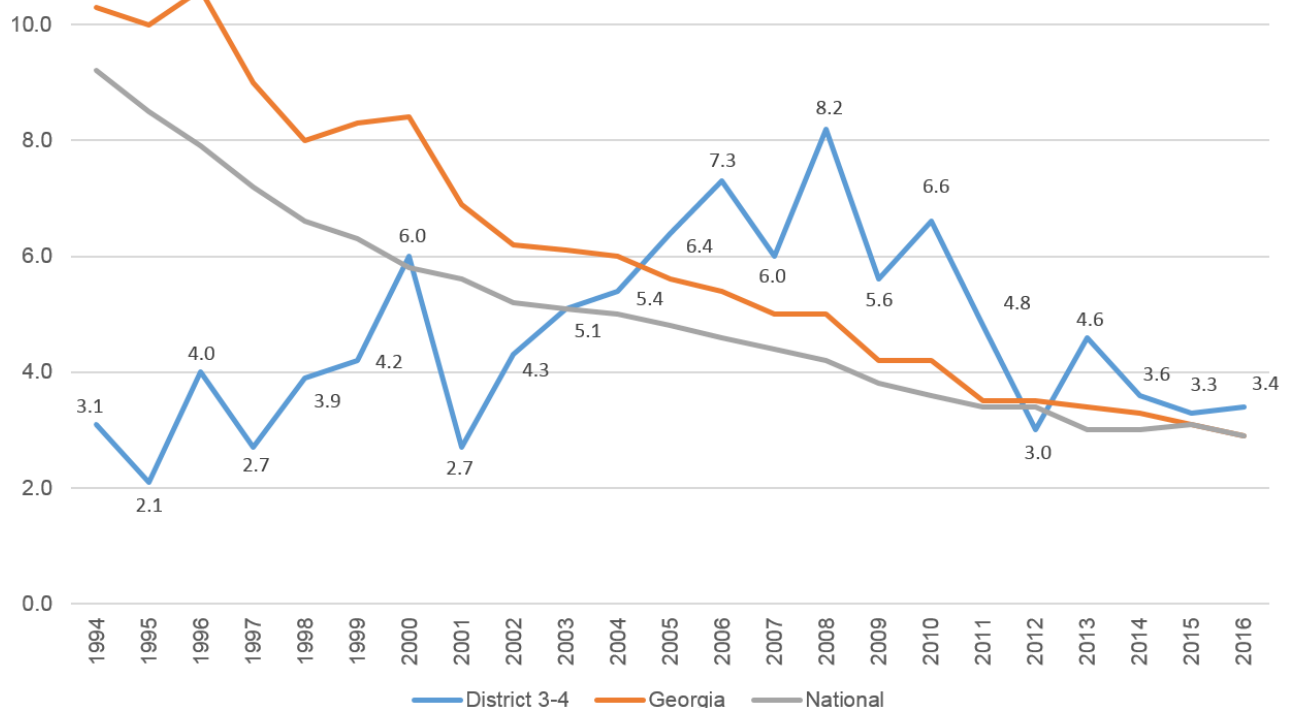
# of Outbreaks by Fiscal Year	
FY2013	37
FY2014	26
FY2015	25
FY2016	26
FY2017	23

Outbreak Locations District 3-4 FY2017



Tuberculosis control efforts in District 3-4 have led to a decline in active TB cases from a high in 2008.

Tuberculosis Rates, District 3-4, Georgia, and US: 1994-2016



*Based on a rate per 100,000

Performance Management / Community Health

Purpose of the Program:

Performance Management

- Ensure performance management efforts are developed, managed and sustained through evaluation and measuring performance
- Maintain alignment of strategic goals and objectives with program and accreditation standards
- Encourage a departmental “Culture of Quality Improvement” through best practices and staff engagement

Community Health

- Assess the health needs of communities within our district
- Collaborate with community partners to create and implement health interventions
- Identify & execute practices and interventions proven effective
- Promote health and prevent chronic disease

Programs & initiatives within Community Health include:

Health Promotion
Physical Activity
Nutrition
Worksite Wellness
Tobacco Use Prevention
Asthma

Beginning to plan for composition of the new Community Health Assessments (CHA) in Gwinnett, Newton & Rockdale Counties.



Breast & Cervical Cancer Program (BCCP)

Purpose of the Program:

To provide access to timely and high-quality breast and cervical cancer screening and diagnostic services to women of Gwinnett, Newton and Rockdale Counties.

Participants include residents of Gwinnett, Newton and Rockdale Counties who are:

- Female
- Between the ages of 40-64 (breast cancer screening)
- Between the ages of 21-64 (cervical cancer screening)
- Low income
- Uninsured or underinsured
- Rarely or never screened

BCCP Program Data FY2017

Service	Data
Total # of Women Participating in BCCP	980
# of Screening Mammograms	724
# of Diagnostic Mammograms	339
# of Breast Ultrasounds	273
# of Breast Cancer Diagnosed	18
# of Cervical Cancer	13

Women screened through the **Susan G. Komen®** Grant FY2017

(No BCCP funds used for this)

Service	Data
Total # of Women Participating in BCCP	339
# of Screening Mammograms	198
# of Diagnostic Mammograms	129
# of Breast Ultrasounds	142
# of Biopsies	21
# of Cervical Cancer	0



Adolescent Health / Youth Development (AHYD)

Purpose of the Program:

- Support teens in their academic and social growth
- Promote positive school climate and culture
- Encourage respect for diversity
- Nurture students by providing them the knowledge to make health choices through education, mentoring, recreation, and skill building
- Understand that all young people need support, guidance, and opportunities
- Educate people on the challenges teens face

AHYD services are available (at no cost) to adolescents throughout the health district at the following participating schools:

- Meadowcreek High School (Gwinnett)
- Discovery High School (Gwinnett)
- Newton High School (Newton)
- Salem High School (Rockdale)

Results:

3,346 students served with:

- Personal Responsibility Education program (PREP)
- Male and female focus groups
- Pregnant and Parenting teen group
- Lunch and Learns

Conducted other program activities that allowed opportunity to discuss responsible practices (abstinence/abstinence plus).

39 active participants in the Pregnant & Parenting Teen program with **NO** repeat pregnancies.

Students in the AHYD Program (2016-2017)

Graduation Rate	↑ 80%
Attendance Rate	↑ 90%
Reduced Discipline Referrals	↓ 88%



Children First

Purpose of the Program:

The single point of entry for children and youth with special needs.

Provides developmental screenings for ages birth to three, gives referrals to Children's Medical Services (ages birth—21) and Babies Can't Wait (ages birth to three), and gives referrals for families with needs other than diagnosis or developmental.

FY 2017

1,281

children referred to Babies Can't Wait

293

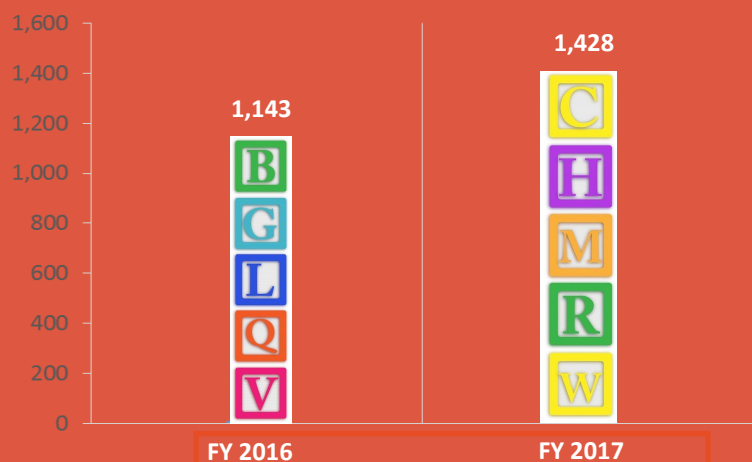
children referred to Children's Medical Services

1,057

children referred to the public school system.



ENROLLED IN C1ST



Children's Medical Services (CMS)

Purpose of the Program

Coordinate specialty health care services for eligible children with chronic medical conditions in Georgia.

What CMS Does

Care Coordinators assist families with identifying and meeting all medical needs. This is done by providing referrals to community resources, assisting families with finding medical specialists, as well as, providing financial assistance when needed.

Who is Eligible?

- Children & Youth ages birth to age 21
- Live in the Gwinnett, Newton, and Rockdale County Health District
- Have an eligible medical condition
- Meet income eligibility



**Total Clients Served
in FY 2017**

301

GNR District

**# of Active Clients at the Close
of FY 2017**

223

GNR District



FY 2017 Data			
	Referrals Received	Newly Enrolled Clients	Diagnoses Represented
Gwinnett	297	58	421
Newton	29	3	28
Rockdale	29	5	42
District Total	355	66	491

Early Hearing Detection Intervention (EHDI)

Purpose of the Program:

- Provide education and collaboration to families with newborns and professionals about newborn hearing screening and the importance of follow up hearing screening via multiple communication methods.
- Track and follow –up of families within the district whose child has been referred for a follow up screening and or has been confirmed hearing loss.
- Ensure the goals of Early Hearing Detection Intervention (EHDI) benchmarks of screening by 1 month of age, diagnosis by 3 months of age and enrollment in early intervention by 6 months of age met within the District.
- Ensuring linkage to early intervention services following diagnosis of hearing loss

District 3-4

13,789

Total Births

624

Total # Refer Initial Hearing¹

4.52%

% that Fail Initial Hearing Screen

76

Total # Pending F/U Hearing²

12

Total # Pending Diagnostic³

29

Total # Referred to Intervention⁴

¹ Failed initial hearing screening and referred to District

² Infant failed rescreen – referred for a diagnostic screening

³ The # of infants with an incomplete diagnostic workup. This # depends on when the diagnosis of a confirmed hearing loss was made and the # could span multiple fiscal years.

⁴ Infants referred to intervention during the fiscal year





**COUNTY HEALTH
DEPARTMENTS**

www.gnrhealth.com

