

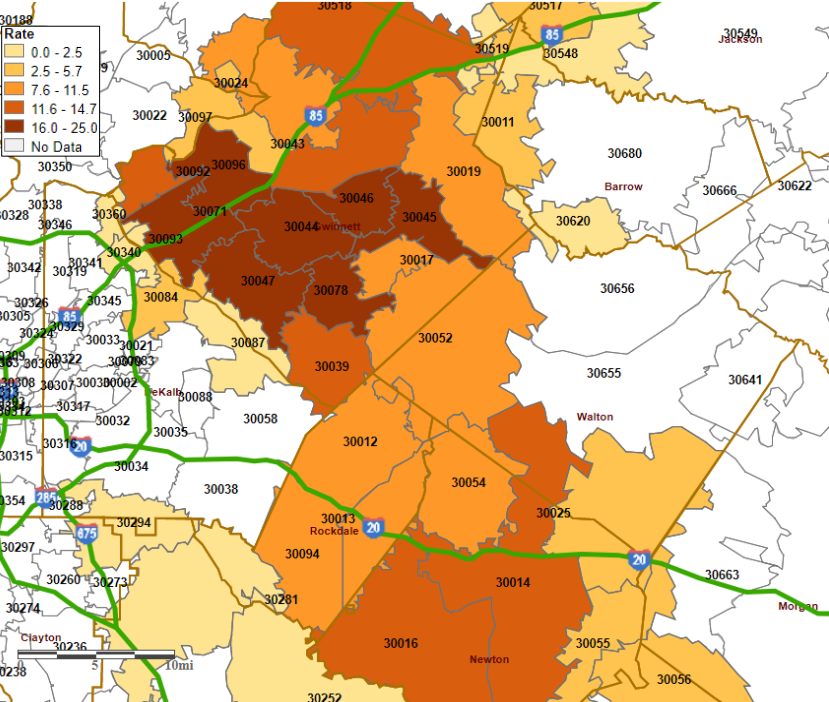
Gwinnett, Newton, & Rockdale County Health Departments



COVID-19 Snapshot, data as of 12pm July 20, 2020

This is an emerging and dynamic situation, therefore our data and recommendations are subject to change. This report provides a snapshot of COVID-19 illnesses and specimen collection operations in response to the COVID-19 pandemic. The purpose of this report is to provide situational awareness to our district partners and community members.

COVID-19 Incidence Rate per 1,000 by zip-code, as of July 20, 2020



COVID-19 Confirmed Cases & Deaths*	No. Cases	No. Deaths
Gwinnett County	13,398	198
Newton County	1,189	19
Rockdale County	874	11
Total	15,461	228
Illness Characteristics*	Among all Cases (N=15,431)	Among Deaths (N=228)
Gender		
Male	7,116 (46%)	103 (45%)
Female	7,910 (51%)	125 (55%)
Median Age (in years)	39	76
Age range (in years)	0 – 102	30 - 98
Total Hospitalizations	1,786	182
% Hospitalized	11%	80%
Total with no Underlying Conditions	2,048	7
Total with Underlying Conditions	2,923	186
% with Underlying Conditions (among those with known status)**	58.8%	96.4%
Underlying Conditions unknown	10,490	35

COVID-19 Confirmed Cases & Deaths* by Race	Among all Cases (N=15,431)	Among Deaths (N=228)	COVID-19 Confirmed Cases & Deaths* by Race	Among all Cases (N=15,431)	Among Deaths (N=228)
Asian	447 (2.89%)	15 (6.58%)	White	4,154 (26.87%)	115 (50.44%)
Hispanic/Latino	8 (<.1%)	0 (0%)	Hispanic/Latino	2,270 (14.68%)	15 (6.58%)
Non-Hispanic/ Latino	363 (2.35%)	15 (6.58%)	Non-Hispanic/ Latino	1,585 (10.25%)	100 (43.86%)
Not Specified	76 (0.43%)	0 (0%)	Not Specified	299 (1.94%)	0 (0%)
Black	2,552 (16.51%)	72 (31.58%)	Other	1120 (7.24%)	18 (7.89%)
Hispanic/Latino	43 (0.28%)	0 (0%)	Hispanic/Latino	767 (4.96%)	18 (7.89%)
Non-Hispanic/ Latino	2,169 (14.03%)	71 (31.14%)	Non-Hispanic/ Latino	132 (0.85%)	0 (0%)
Not Specified	340 (2.20%)	1 (0.44%)	Not Specified	221 (1.43%)	0 (0%)
Native Hawaiian/Pacific Islander	17 (0.11%)	2 (0.88%)	Unknown	7,162 (46.32%)	6 (2.63%)
Hispanic/Latino	6 (<.1%)	0 (0%)	Hispanic/Latino	781 (5.05%)	3 (1.32%)
Non-Hispanic/ Latino	8 (<.1%)	2 (0.88%)	Non-Hispanic/ Latino	183 (0.87%)	1 (0.44%)
Not Specified	3 (<.1%)	0 (0%)	Not Specified	6,246 (40.39%)	2 (0.88%)
American Indian/ Native American	9 (<.1%)	0 (0%)	*Data Source: GA DPH, State Electronic Disease Surveillance System ** Among patients with underlying conditions information available Note: All data is provisional as data reporting, investigation, cleaning, and validating is ongoing.		
Non-Hispanic/ Latino	7 (<.1%)	0 (0%)			
Not Specified	2 (<.1%)	0 (0%)			

Gwinnett, Newton, & Rockdale County Health Departments

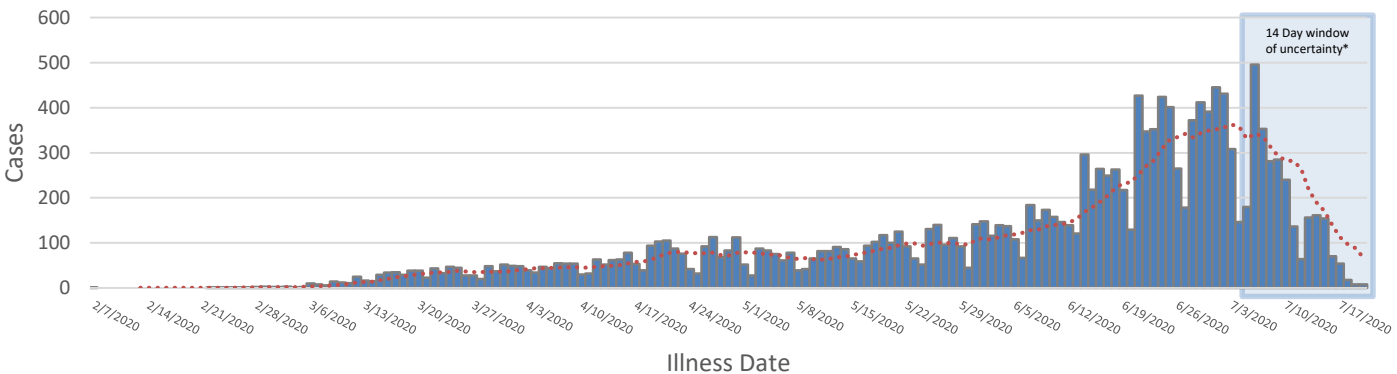


COVID-19 Snapshot, data as of July 20, 2020

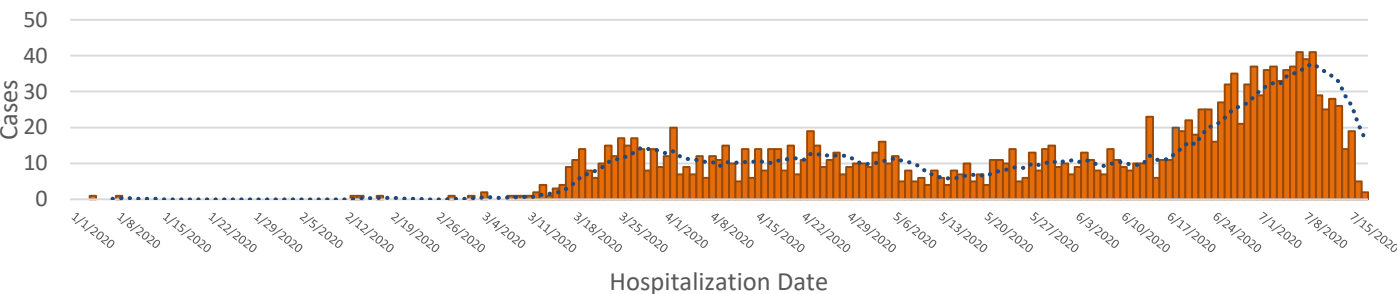
Gwinnett, Newton, and Rockdale County Health Department’s Epidemiology Program is responsible for investigating every laboratory confirmed case of COVID-19. The data displayed here represents the Epidemiology Program’s activities and provides a portrayal of the current situation in the district.

Per Gwinnett, Newton, and Rockdale County Health Departments reporting policy only confirmed COVID-19 cases that reside within the three counties that make up the district are displayed here. According to the Centers for Disease Control and Prevention the case definition of a confirmed case of COVID-19 does not include serology (i.e. antibody tests). These tests are reportable, but because they are not included in the case definition for a confirmed COVID-19 case, are not displayed here.

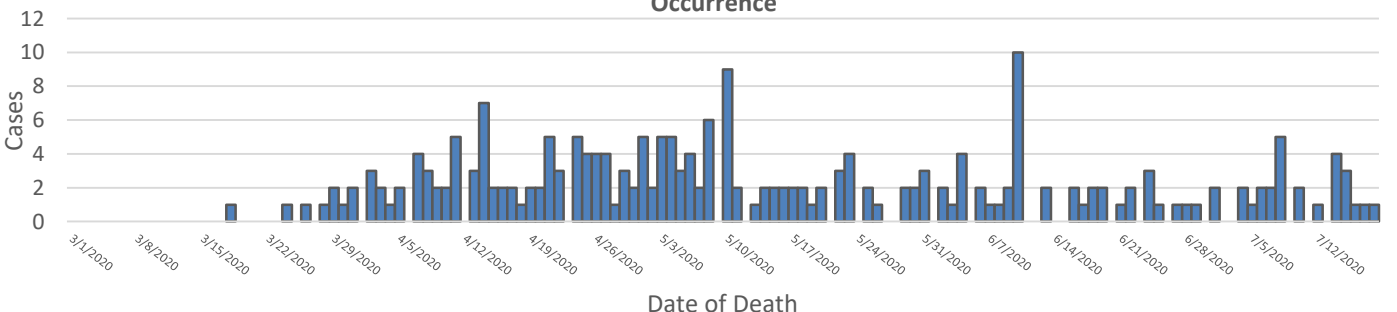
Confirmed COVID-19 Cases, Gwinnett, Newton, and Rockdale Counties, as of 7/20/2020



Hospitalizations of Confirmed COVID-19 cases, Gwinnett, Newton, and Rockdale Counties, by Date of Occurrence



Deaths Among Confirmed COVID-19 Cases, Gwinnett, Newton, and Rockdale Counties, by Date of Occurrence



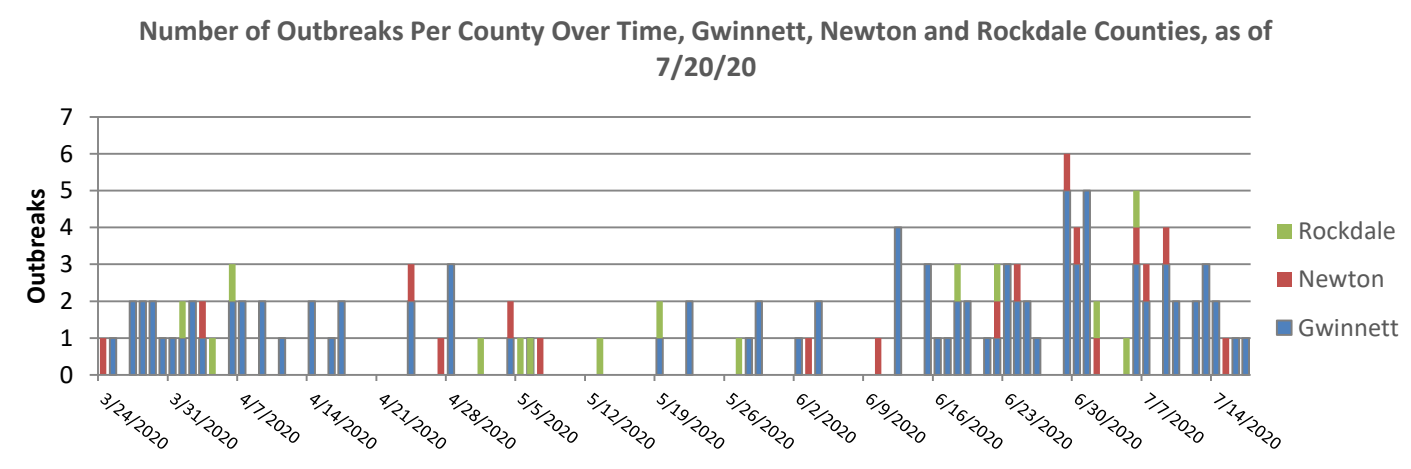
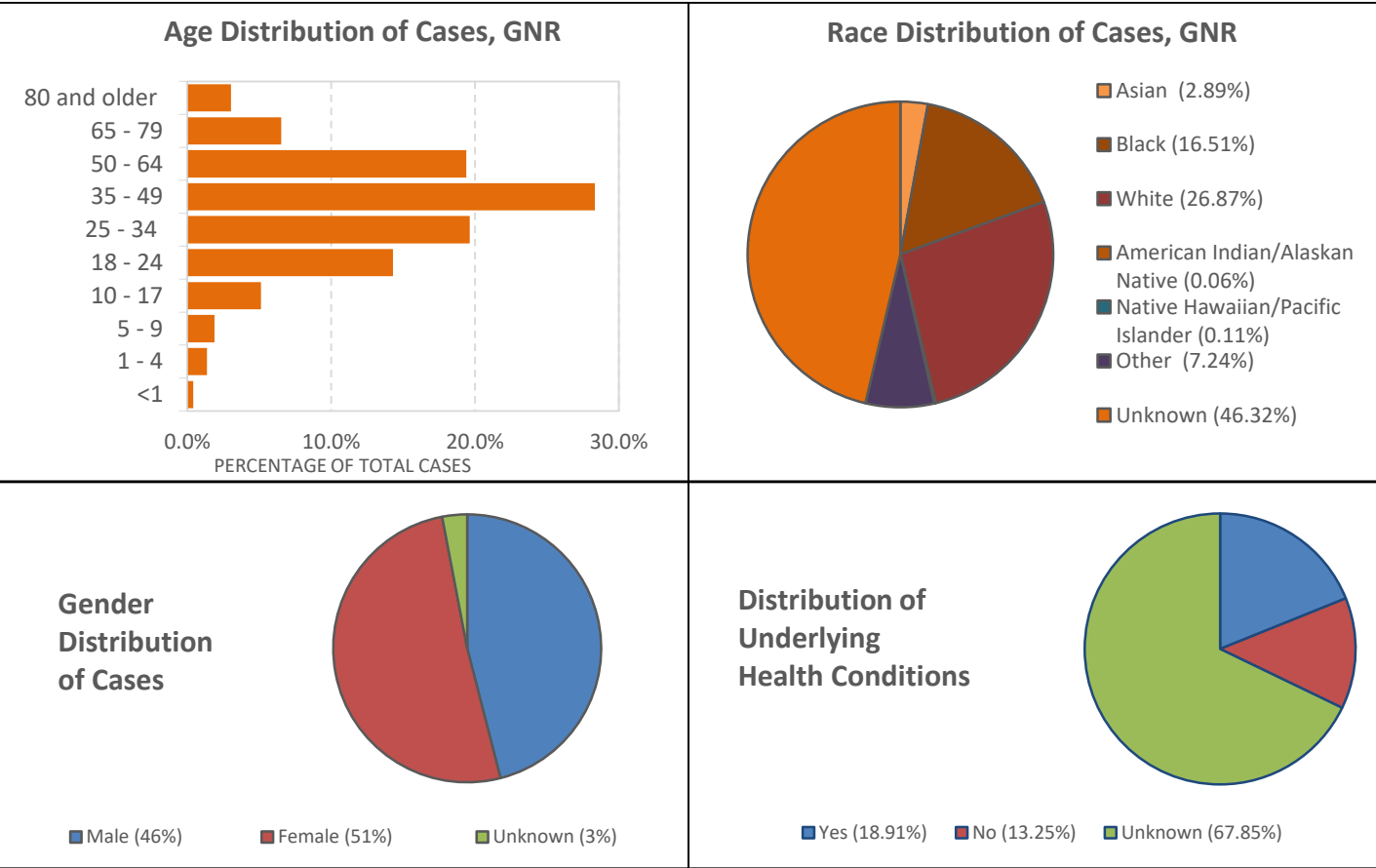
*14-day window of uncertainty – Confirmed cases over the last 14 days may not be accounted for due to illnesses yet to be reported or test result that may still be pending.

Positivity Data from GNR Specimen Collection Sites, as Compared with all Reported Lab Specimens from Gwinnett, Newton, Rockdale Counties and GA.

Two specimen Collection Sites (SPOCs) operate daily in Gwinnett and one alternating weeks in Newton and Rockdale Counties. SPOCs continue to offer specimen collection services at no cost to patients. Specimen collection at SPOC sties is done by appointment only. Appointments can be made on our website at www.gnrhealth.com or by calling 770-513-5631. A total of 4,000-5,000 specimens are collected each week.

	GNR SPOCs	Gwinnett	Newton	Rockdale	Georgia
Positive Test Results	15,600 (12.1%)	13,613 (12.9%)	1,114 (9.2%)	873 (8.1%)	133,027 (10.4%)
Negative Test Results	113,051 (87.9%)	92,190 (87.1%)	9,958 (90.8%)	9,925 (91.9%)	1,140,754 (89.6%)
Total Tests	128,651	105,803	12,050	10,798	1,273,781

Data Source, SENDSS, Testing by District/County Quick Report. Data numbers may not align with current totals due to delay in report functionality . Report run 7/13/20.



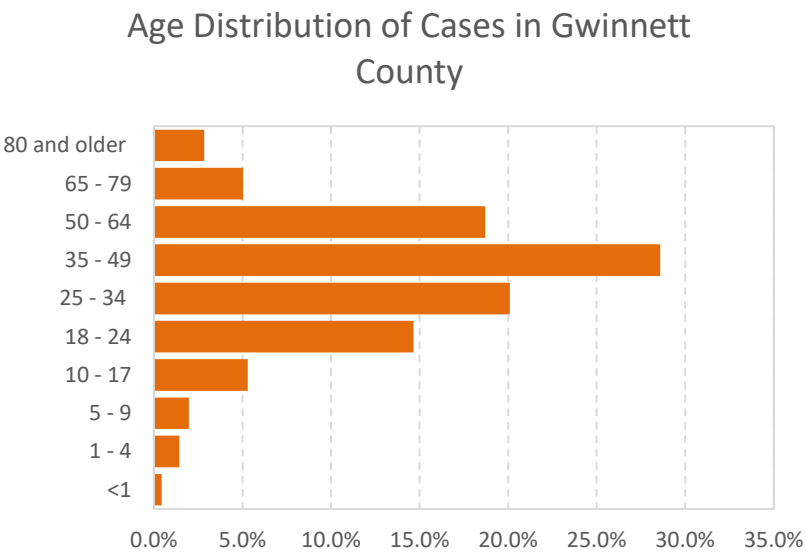
Epidemiology Overview for Gwinnett County



COVID-19 Snapshot, data as of 12pm July 20, 2020

Provided here is a detailed look at the activities of the Epidemiology Program in Gwinnett County, one of three counties represented in district 3-4. Gwinnett county's population is 936, 250 and makes up 82.2% of residents within the district.

In Gwinnett County there has been a 16.9% increase in newly confirmed COVID-19 Cases between the week of **7/7/20 – 7/13/20 (n=11,461)** and **7/14/20 – 7/20/20 (n=13,398)**.



COVID-19 Confirmed Cases & Deaths*	No. Cases	No. Deaths
Outbreak Related	842	103
Total	13,398	198
Illness Characteristics*	Among all Cases (N=13,398)	Among Deaths (N=198)
Gender		
Male	6,225 (46.5%)	78 (42.6%)
Female	6,812 (50.8%)	104 (56.8%)
Median Age (in years)	38	79
Age range (in years)	0 – 107	30 – 98
Total Hospitalizations	1,507	156
% Hospitalized	11%	79%
Total with no Underlying Conditions	1,797	7
Total with Underlying Conditions	2,485	163
% with Underlying Conditions (among those with known status)**	58%	96%
Underlying Conditions unknown	9,116	28

COVID-19 Confirmed Cases & Deaths* by Race	Among all Cases (N=13,398)	Among Deaths (N=198)	COVID-19 Confirmed Cases & Deaths* by Race	Among all Cases (N=13,398)	Among Deaths (N=198)
Asian	433 (3.23%)	15 (7.58%)	White	3,739 (27.91%)	105 (53.03%)
Hispanic/Latino	8 (<.1%)	0 (0%)	Hispanic/Latino	2,161 (16.13%)	15 (7.58%)
Non-Hispanic/ Latino	349 (2.60%)	15 (7.58%)	Non-Hispanic/ Latino	1,319 (0.57%)	90 (45.45%)
Not Specified	76 (1.20%)	0 (0%)	Not Specified	259 (1.93%)	0 (0%)
Black	1,761 (13.14%)	53 (26.77%)	Other	1,073 (8.01%)	18 (9.09%)
Hispanic/Latino	41 (0.31%)	0 (0%)	Hispanic/Latino	755 (5.64%)	18 (1.52%)
Non-Hispanic/ Latino	1,498 (11.18%)	53 (26.77%)	Non-Hispanic/ Latino	123 (0.92%)	0 (0%)
Not Specified	222 (1.65%)	0 (0%)	Not Specified	195 (1.45%)	0 (0%)
Native Hawaiian/Pacific Islander	17 (0.13%)	2 (1.01%)	Unknown	6,367 (47.52%)	5 (2.53%)
Hispanic/Latino	6 (<.1%)	0 (0%)	Hispanic/Latino	762 (2.97%)	3 (1.52%)
Non-Hispanic/ Latino	8 (<.1%)	2 (1.01%)	Non-Hispanic/ Latino	124 (0.93%)	1 (0.51%)
Not Specified	3 (<.1%)	0 (0%)	Not Specified	5,481 (40.91%)	1 (0.51%)
American Indian/ Native American	8 (<.1%)	0 (0%)	*Data Source: GA DPH, State Electronic Disease Surveillance System **Among patients with underlying conditions information available Note: All data is provisional as data reporting, investigation, cleaning, and validating is ongoing.		
Non-Hispanic/Latino	7 (<.1%)	0 (0%)			
Not Specified	1 (<.1%)	0 (0%)			

Source for data provided above: GA DPH, State Electronic Disease Surveillance System; Note: All data is provision as data reporting, investigation, cleaning, and validating is ongoing

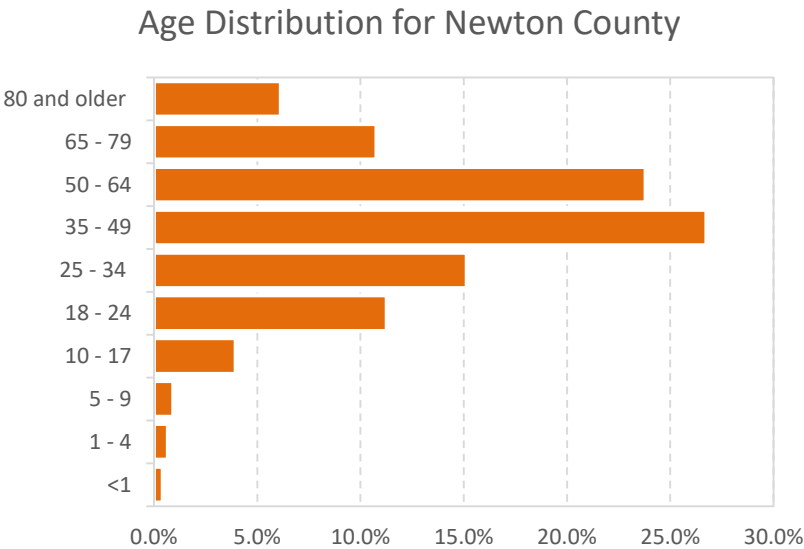
Epidemiology Overview for Newton County



COVID-19 Snapshot, *data as of 12pm July 20, 2020*

Provided here is a detailed look at the activities of the Epidemiology Program in Newton County, one of three counties represented in district 3-4. Gwinnett county’s population is 111, 744 and makes up 9.8% of residents within the district.

In Newton County there has been a 25.8% increase in newly confirmed COVID-19 Cases between the week of **7/7/20 – 7/13/20 (n=945)** and **7/14/20 – 7/20/20 (n=1,189)**.



COVID-19 Confirmed Cases & Deaths*	No. Cases	No. Deaths
Outbreak Related	185	7
Total	1,189	19
Illness Characteristics*	Among all Cases (N=1,189)	Among Deaths (N=19)
Gender		
Male	330 (44%)	11 (58%)
Female	387 (54%)	8 (42%)
Median Age (in years)	45	73
Age range (in years)	0 – 98	50 - 89
Total Hospitalizations	144	16
% Hospitalized	12%	84%
Total with no Underlying Conditions	146	0
Total with Underlying Conditions	250	12
% with Underlying Conditions (among those with known status)**	63%	100%
Underlying Conditions unknown	793	7

COVID-19 Confirmed Cases & Deaths* by Race	Among all Cases (N=1,189)	Among Deaths (N=19)	COVID-19 Confirmed Cases & Deaths* by Race	Among all Cases (N=1,189)	Among Deaths (N=19)
Asian	5 (0.42%)	0 (0%)	White	277 (23.30%)	7 (36.84%)
Hispanic/Latino	0 (0%)	0 (0%)	Hispanic/Latino	50 (4.21%)	0 (0%)
Non-Hispanic/ Latino	5 (0.42%)	0 (0%)	Non-Hispanic/ Latino	198 (16.65%)	7 (36.84%)
Not Specified	0 (0.0%)	0 (0%)	Not Specified	2429 (2.44%)	0 (0%)
Black	412 (34.65%)	11 (57.89%)	Other	18 (1.51%)	0 (0%)
Hispanic/Latino	1 (<0.1%)	0 (0%)	Hispanic/Latino	5 (0.42%)	0 (0%)
Non-Hispanic/ Latino	355 (29.86%)	11 (57.89%)	Non-Hispanic/ Latino	3 (0.25%)	0 (0%)
Not Specified	56 (4.71%)	0 (0%)	Not Specified	10 (0.84%)	0 (0%)
Native Hawaiian/Pacific Islander	0 (0%)	0 (0%)	Unknown	477 (40.11%)	1 (5.26%)
Hispanic/Latino	0 (0%)	0 (0%)	Hispanic/Latino	9 (0.75%)	0 (0%)
Non-Hispanic/ Latino	0 (0%)	0 (0%)	Non-Hispanic/ Latino	7 (0.59%)	1 (5.26%)
Not Specified	0 (0%)	0 (0%)	Not Specified	461 (22.71%)	0 (0%)
American Indian/ Native American	0 (0%)	0 (0%)	*Data Source: GA DPH, State Electronic Disease Surveillance System **Among patients with underlying conditions information available Note: All data is provisional as data reporting, investigation, cleaning, and validating is ongoing.		

Epidemiology Overview for Rockdale County

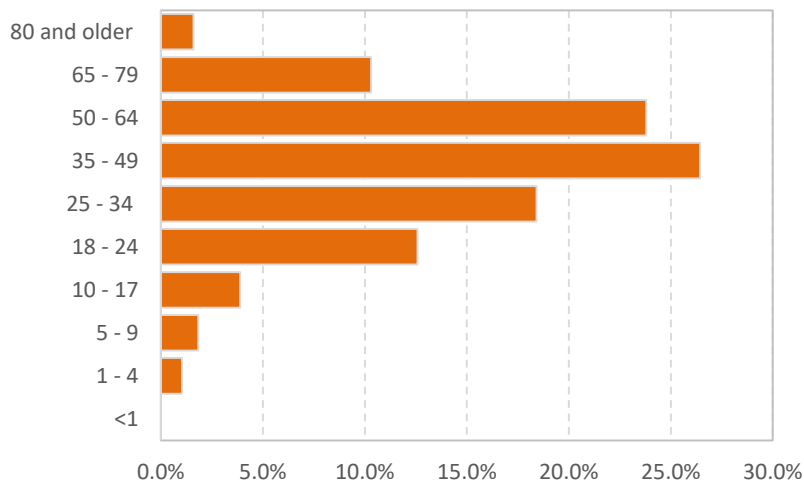
COVID-19 Snapshot, data as of 12pm July 20, 2020



Provided here is a detailed look at the activities of the Epidemiology Program in Rockdale County, one of three counties represented in district 3-4. Gwinnett county's population is 90, 896 and makes up 7.9% of residents within the district.

In Rockdale County there has been a 25.0% increase in newly confirmed COVID-19 Cases between the week of **7/7/2020 – 7/13/2020 (n=701)** and **7/14/2020 – 7/20/2020 (n=874)**.

Age Distribution for Rockdale County



COVID-19 Confirmed Cases & Deaths*	No. Cases	No. Deaths
Outbreak Related	63	1
Total	874	11
Illness Characteristics*	Among all Cases (N=874)	Among Deaths (N=11)
Gender		
Male	382 (44%)	4 (36.4%)
Female	477 (55%)	7 (63.6%)
Median Age (in years)	43	63
Age range (in years)	1 – 93	38 – 93
Total Hospitalizations	135	10
% Hospitalized	15%	91%
Total with no Underlying Conditions	105	0
Total with Underlying Conditions	188	11
% with Underlying Conditions (among those with known status)**	64%	100%
Underlying Conditions unknown	581	0

COVID-19 Confirmed Cases & Deaths* by Race	Among all Cases (N=874)	Among Deaths (N=11)	COVID-19 Confirmed Cases & Deaths* by Race	Among all Cases (N=874)	Among Deaths (N=11)
Asian	9 (1.03%)	0 (0%)	White	138 (15.79%)	3 (27.27%)
Hispanic/Latino	0 (0%)	0 (0%)	Hispanic/Latino	59 (6.75%)	0 (0%)
Non-Hispanic/ Latino	9 (1.03%)	0 (0%)	Non-Hispanic/ Latino	68 (7.78%)	3 (27.27%)
Not Specified	0 (0%)	0 (0%)	Not Specified	11 (1.26%)	0 (0%)
Black	379 (43.36%)	8 (72.73%)	Other	29 (3.32%)	0 (0%)
Hispanic/Latino	1 (0.11%)	0 (0%)	Hispanic/Latino	7 (0.80%)	0 (0%)
Non-Hispanic/ Latino	316 (36.16%)	7 (63.64%)	Non-Hispanic/ Latino	6 (0.69%)	0 (0%)
Not Specified	62 (7.09%)	1 (9.09%)	Not Specified	16 (1.83%)	0 (0%)
Native Hawaiian/Pacific Islander	0 (0%)	0 (0%)	Unknown	318 (36.38%)	0 (0%)
Hispanic/Latino	0 (0%)	0 (0%)	Hispanic/Latino	10 (1.14%)	0 (0%)
Non-Hispanic/ Latino	0 (0%)	0 (0%)	Non-Hispanic/ Latino	7 (0.45%)	0 (0%)
Not Specified	0 (0%)	0 (0%)	Not Specified	304 (34.78%)	0 (0%)
American Indian/ Native American	1 (0.11%)	0 (0%)	*Data Source: GA DPH, State Electronic Disease Surveillance System **Among patients with underlying conditions information available Note: All data is provisional as data reporting, investigation, cleaning, and validating is ongoing.		
Not Specified	1 (0.11%)	0 (0.0%)			