

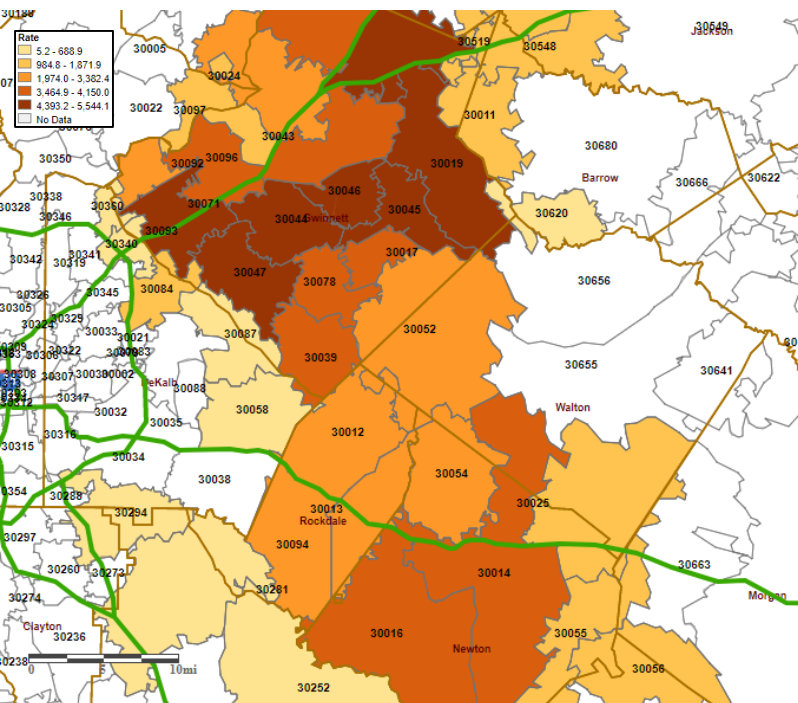
# Gwinnett, Newton, & Rockdale County Health Departments



## COVID-19 Snapshot, data as of 9am November 30, 2020

This is an emerging and dynamic situation, therefore our data and recommendations are subject to change. This report provides a snapshot of COVID-19 illnesses and specimen collection operations in response to the COVID-19 pandemic. The purpose of this report is to provide situational awareness to our district partners and community members.

### COVID-19 Incidence Rate per 100,000 by zip-code, as of November 30, 2020



COVID-19 Cases & Deaths*				
	Confirmed cases	Presumptive Cases	Total Cases†	Total Deaths†
Gwinnett County	36,271	3,150	39,421	521
Newton County	3,356	485	3,841	108
Rockdale County	2,561	199	2,760	57
<b>Total</b>	<b>42,188</b>	<b>3,834</b>	<b>46,022</b>	<b>686</b>
Illness Characteristics*† N=46,022 n=686				
	Among all Cases		Among Deaths	
Gender				
Male	21,041 (46%)		340 (50%)	
Female	24,327 (53%)		346 (50%)	
Median Age (years)	38		74	
Age range (years)	0 – 103		15 - 102	
Total Hospitalizations	3,804 (8%)		507 (74%)	
Total with Underlying Conditions	8,722 (55%)**		488 (99%)**	
Underlying Conditions unknown	30,107		191	

### Total Cases & Deaths by Race\*† N = 46,022; Total Deaths n=686

	Among all Cases	Among Deaths		Among all Cases	Among Deaths
<b>Asian</b>	<b>2,205 (4.79%)</b>	<b>41 (5.98%)</b>	<b>White</b>	<b>16,360 (35.55%)</b>	<b>371 (54.08%)</b>
Hispanic/Latino	17 (0.04%)	0 (0%)	Hispanic/Latino	5,811 (12.63%)	69 (10.06%)
Non-Hispanic/ Latino	1,734 (3.77%)	41 (6.02%)	Non-Hispanic/ Latino	9,086 (19.74%)	301 (43.88%)
Not Specified	454 (0.99%)	0 (0%)	Not Specified	1,463 (3.18%)	<5 (0.15%)
<b>Black</b>	<b>10,118 (21.99%)</b>	<b>205 (29.88%)</b>	<b>Other</b>	<b>3,726 (8.10%)</b>	<b>61 (8.89%)</b>
Hispanic/Latino	204 (0.44%)	<5 (0.15%)	Hispanic/Latino	2,470 (5.37%)	57 (8.31%)
Non-Hispanic/ Latino	8,589 (18.66%)	203 (29.59%)	Non-Hispanic/ Latino	506 (1.10%)	<5 (0.44%)
Not Specified	1,325 (2.88%)	<5 (0.15%)	Not Specified	750 (1.63%)	<5 (0.15%)
<b>Native Hawaiian/Pacific Islander</b>	<b>53 (0.12%)</b>	<b>&lt;5 (0.30%)</b>	<b>Unknown</b>	<b>13,507 (29.35%)</b>	<b>&lt;5 (0.58%)</b>
Hispanic/Latino	12 (0.03%)	0 (0%)	Hispanic/Latino	2,048 (4.45%)	<5 (0.15%)
Non-Hispanic/ Latino	33 (0.07%)	<5 (0.30%)	Non-Hispanic/ Latino	622 (1.35%)	<5 (0.29%)
Not Specified	8 (0.02%)	0 (0%)	Not Specified	10,837 (23.55%)	<5 (0.15%)
<b>American Indian/Alaskan Native</b>	<b>53 (0.12%)</b>	<b>&lt;5 (0.29%)</b>	*Data Source: GA DPH, State Electronic Disease Surveillance System		
Hispanic/Latino	9 (0.02%)	0 (0%)	**Among patients with underlying conditions information available		
Non-Hispanic/ Latino	31 (0.07%)	<5 (0.29%)	Note: All data is provisional as data reporting, investigation, cleaning, and validating is ongoing.		
Not Specified	13 (0.03%)	0 (0%)	† Represents total confirmed and presumptive cases		

Due to the increasing availability of antigen testing, effective 9/1/2020, we will begin reporting antigen positives in addition to PCR positive patients. Patients testing positive with an antigen test are considered presumptive cases and warrant Public Health investigation and control measures, but are not included in confirmed case counts. The remainder of data reported in this report will include total cases which encompasses confirmed and presumptive.

# Gwinnett, Newton, & Rockdale County Health Departments

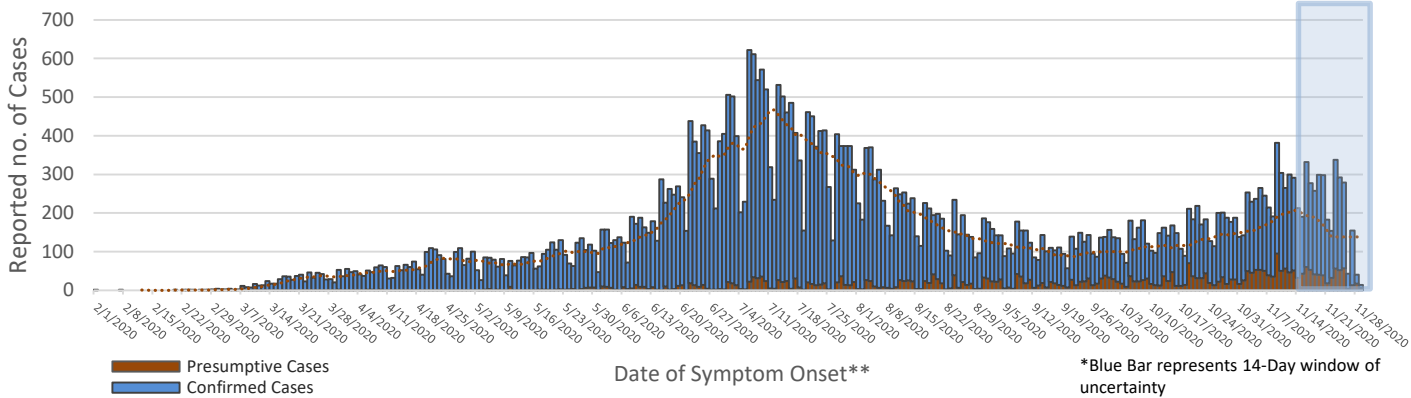


## COVID-19 Snapshot, data as of 9am November 30, 2020

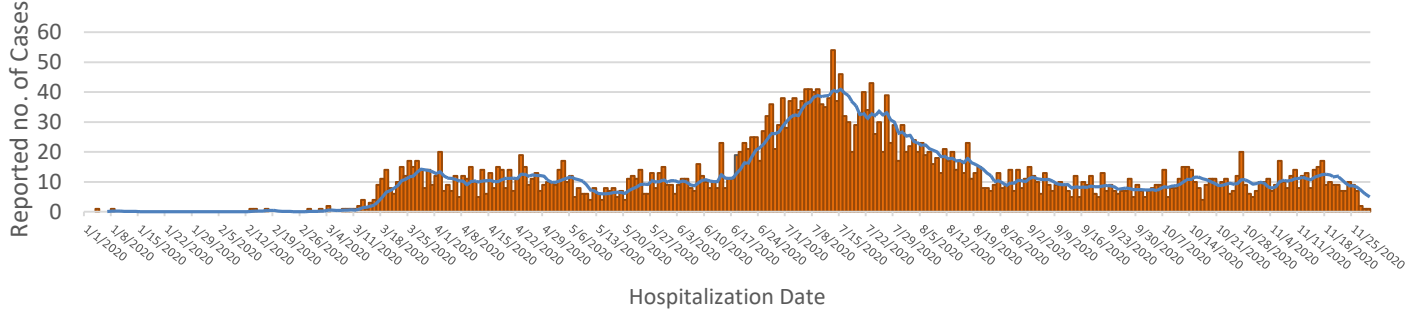
Gwinnett, Newton, and Rockdale County Health Department’s Epidemiology Program is responsible for investigating every case of COVID-19 with laboratory evidence of recent infection. The data displayed here represents the Epidemiology Program’s activities and provides a portrayal of the current situation in the district.

Per Gwinnett, Newton, and Rockdale County Health Departments reporting policy only COVID-19 cases with laboratory evidence of recent infection that reside within the three counties that make up the district are displayed here. According to the Centers for Disease Control and Prevention the case definition of COVID-19 case with laboratory evidence of recent infection does not include serology (i.e. antibody tests). These tests are reportable, but because they are not included in the case definition for a COVID-19 case with laboratory evidence of recent infection, are not displayed here.

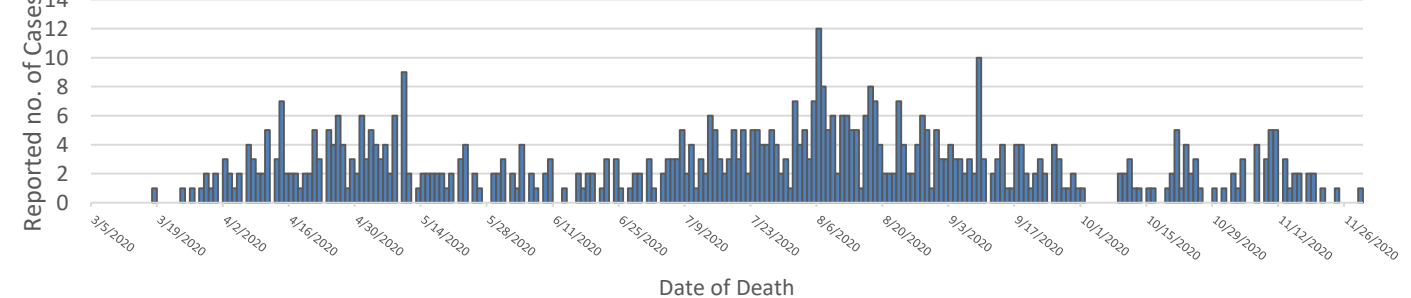
Reported COVID-19 Cases in residents of Gwinnett, Newton, and Rockdale Counties, as of 11/30/2020<sup>†</sup>



Reported Hospitalizations of COVID-19 cases in residents of Gwinnett, Newton, and Rockdale Counties, by Date of Occurrence<sup>†</sup>



Reported Deaths Among COVID-19 Cases in residents of Gwinnett, Newton, and Rockdale Counties, by Date of Occurrence<sup>†</sup>



\*14-day window of uncertainty – Confirmed cases over the last 14 days may not be accounted for due to illnesses yet to be reported or test result that may still be pending.  
\*\*For individuals missing symptom onset date, date of first positive specimen collection was used, if both symptom onset and date of first specimen collection are both missing date reported to Public Health Was used  
<sup>†</sup> Represents total confirmed and presumptive cases  
Source for data provided above: GA DPH, State Electronic Disease Surveillance System; Note: All data is provisional as data reporting, investigation, cleaning, and validating is ongoing

Positivity Data from GNR Specimen Collection Sites, as Compared with all Reported Lab Specimens from Gwinnett, Newton, Rockdale Counties and GA (Cumulative - 3/1/2020 – 11/30/2020).

Two specimen Collection Sites (SPOCs) operate daily in Gwinnett and one alternating weeks in Newton and Rockdale Counties. SPOCs continue to offer specimen collection services at no cost to patients. Specimen collection at SPOC sties is done by appointment only. Appointments can be made on our website at [www.gnrhealth.com](http://www.gnrhealth.com) or by calling 770-513-5631. A total of 4,000-5,000 specimens are collected each week.

	GNR SPOCs	Gwinnett	Newton	Rockdale	Georgia
Positive Tests	9,276 (9.6%)	33,941 (9.5%)	3,189 (9.2%)	2,565 (8.3%)	395,848 (9.2%)
Negative Tests	87,521 (90.2%)	321,839 (90.5%)	31,476 (91.8%)	28,197 (91.7%)	3,918,600 (90.8%)
Total Tests	97,456*	355,780	34,665	30,762	4,314,448

Data Source, SENDSS, Testing by District/County Quick Report. Data numbers may not align with current totals due to delay in report functionality . Report run 11/30/20.\*Total includes pending and indeterminate test results.

7-day Positivity Data by County for Gwinnett, Newton, and Rockdale Counties, Week 11/21/2020-11/27/2020

7-day positivity data represents the percentage of positive PCR test results in the district, by county, for the previous 7-day period. All COVID-19 cases are required to be reported to Public Health, but because of a significant reporting delay from facilities to Public Health, these numbers are provisional and subject to change. Also, due to the wide availability of testing in the community, numbers can include individuals who have been tested more than once.

Seven Day Positivity Data			
	Gwinnett	Newton	Rockdale
Positive Tests	1,585 (10.5%)	121 (11.8%)	119 (11.2%)
Negative Tests	13,444 (89.5%)	907 (88.2%)	940 (88.8%)
Total Tests	15,029	1,028	1,059

Data Source, SENDSS, Testing by District/County Quick Report. Data numbers may not align with current totals due to delay in report functionality . Report run 11/30/20 5pm.

14-day Case Rates for Gwinnett, Newton, and Rockdale Counties by Zip Code.

COVID-19 case rate data is calculated using the total number of cases identified during a specified time frame, divided by the population living within that zip code, multiplied by 100,000. Zip Codes with smaller population sizes may see significant variability from week to week. All COVID-19 cases are required to be reported to local public health; however, there can often be a significant reporting delay from facilities to public health. Therefore, these numbers are provisional and subject to change. In accordance with DPH, the date a lab is reported is the date used to calculate two-week case rates. This date will differ, sometimes significantly, from the date an individual becomes ill with symptoms of COVID-19 or the date an individual tested positive for COVID-19.

Two week Case Rates per 100,000 by Zip Code N=3,075; Week 11/14/20 – 11/27/20†										
County	Zip	# of Cases	Case Rate	% Change	County	Zip	# of cases	Case Rate	% Change	
Gwinnett	30011	28	181.49	27.27	Gwinnett	30518	221	389.85	22.78	
	30017	99	405.47	35.62		30519	215	463.21	24.28	
	30019	209	424.26	16.11		30548	18	96.62	-18.18	
	30024	192	248.27	20.75		30620	8	58.63	-20.00	
	30039	179	388.07	7.19	Newton	30014	104	270.52	22.35	
	30043	355	391.51	7.58		30016	191	352.13	27.33	
	30044	326	370.29	7.95		30025	9	96.69	-18.18	
	30045	173	430.57	16.89		30054	26	218.41	52.94	
	30046	132	354.67	21.10		30055	5	151.24	-28.57	
	30047	232	354.63	31.07	30056	5	225.53	66.67		
	30052	137	207.70	21.24	Rockdale	30012	67	242.71	3.08	
	30071	77	305.34	-9.41		30013	93	352.70	40.91	
	30078	125	348.93	21.36		30058	<5	1.73	-	
	30084	29	75.36	-12.12		30094	93	266.26	16.25	
	30087	40	99.99	48.15		30252	<5	2.16	-	
	30092	148	417.85	12.98		30281	<5	2.96	0.00	
	30093	184	333.90	26.90		30294	0	0.00	-	
	30096	267	392.88	30.24	Overall 14-day Case Rates per 100,000					
	30097	94	200.41	44.62	Georgia	-	-	45,247	430.00	15.90
	30340	18	64.22	-18.18	Gwinnett	-	-	3,721	401.00	18.64
	30360	10	62.79	11.11	Newton	-	-	383	349.00	22.46
					Rockdale	-	-	279	308.00	25.20
30517	14	95.52	55.56	Data Source: DPH County Indicator Report, SendSS, data pulled and cleaned as of Monday at 9am. Case rate is reported as 14-day case count per 100k residents based on 2018 census data Case counts and case rates are calculated using total confirmed and presumptive cases.						

Source for data provided above: GA DPH, State Electronic Disease Surveillance System; Note: All data is provisional as data reporting, investigation, cleaning, and validating is ongoing; † Represents total confirmed and presumptive cases

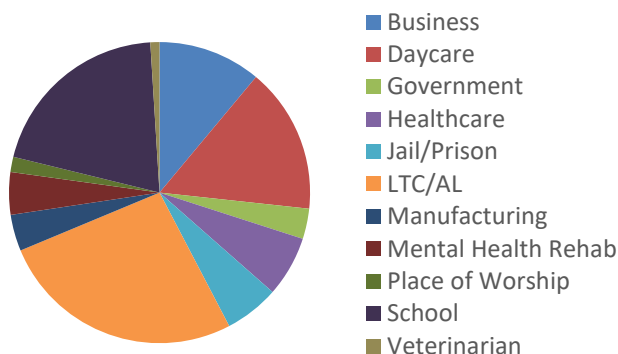
# Epidemiology Overview for Outbreaks



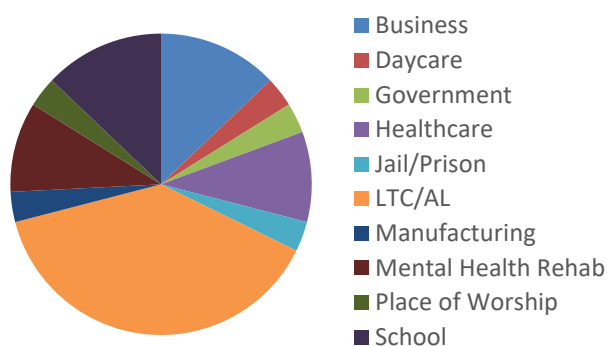
## COVID-19 Snapshot, data as 2pm November 30, 2020

All three counties within the districts are experiencing outbreaks of COVID-19. The information below is intended to provide information on where outbreaks are occurring within the district by county. Totals represent data collected since March 19, 2020.

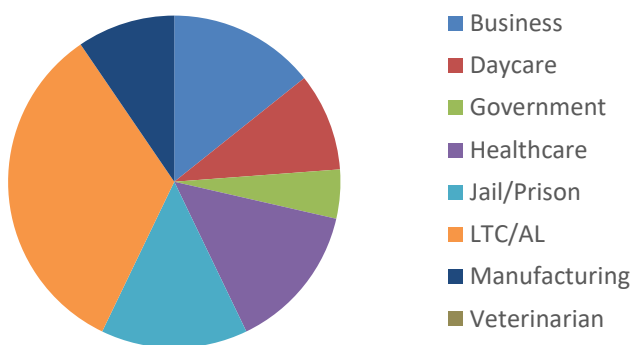
Number of Outbreaks by Facility Type for Gwinnett County



Number of Outbreaks by Facility type for Newton County



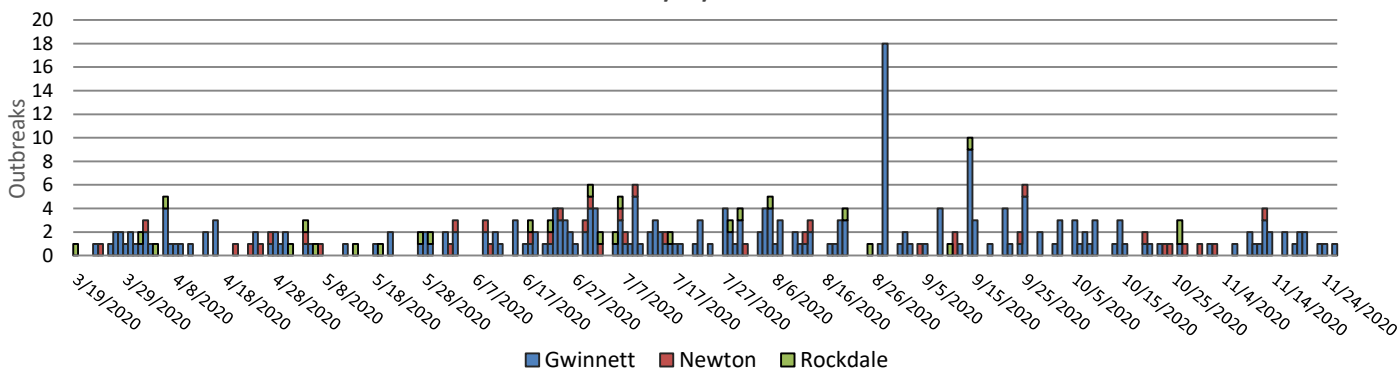
Number of Outbreaks by Facility Type for Rockdale County



Number of Outbreaks by Facility Type N=307

Facility Type	Gwinnett n=253	Newton n=31	Rockdale n=23
Business	11.07%	12.90%	13.04%
Government	3.26%	3.23%	4.35%
Daycare	15.64%	3.23%	8.70%
Healthcare	6.51%	9.68%	13.04%
Jail/Prison	5.86%	3.23%	13.04%
LTC/AL	26.38%	38.71%	30.43%
Manufacturing	3.91%	3.23%	8.70%
Mental Health Rehab	4.56%	9.68%	4.35%
Place of Worship	1.63%	3.23%	0%
Schools	20.20%	12.90%	0%
Veterinarian	0.98%	0%	4.35%

Number of Outbreaks Per County Over Time, Gwinnett, Newton and Rockdale Counties, as of 11/30/2020



# Epidemiology Overview for Gwinnett County

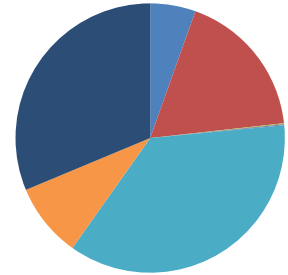
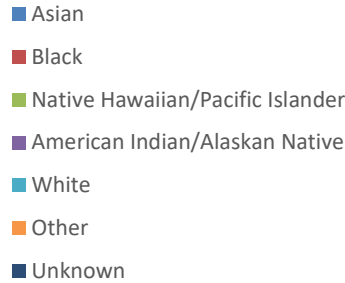


## COVID-19 Snapshot, data as of 9am November 30, 2020

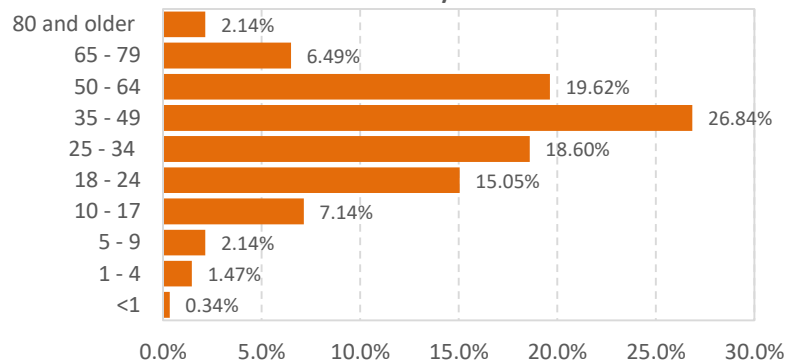
Provided here is a detailed look at the activities of the Epidemiology Program in Gwinnett County, one of three counties represented in district 3-4. Gwinnett county's population is 936, 250 and makes up 82.2% of residents within the district.

In Gwinnett County there has been a 4.6% increase in newly confirmed COVID-19 Cases between the week of **11/16/20 – 11/23/2020 (n=37,670)** and **11/23/20 – 11/30/2020 (n=39,421)**.

### Race Distribution of Cases in Gwinnett County



### Age Distribution of Cases in Gwinnett County



COVID-19 Cases & Deaths*			
	Confirmed Cases	Presumptive Cases	Total Cases† Total Deaths†
Outbreak	1,547	110	1,657 172
Total	36,271	3,150	39,421 521
Illness Characteristics*† N=39,421; n=521			
	Among all Cases	Among Deaths	
Gender			
Male	18,200 (46%)	265 (51%)	
Female	20,659 (52%)	256 (49%)	
Median Age (years)	38	73	
Age range (years)	0 – 103	15 - 102	
Total Hospitalizations	3,102 (8%)	407 (78%)	
Total with Underlying Conditions	7,167 (53%)**	392 (99%)**	
Underlying Conditions unknown	26,017	124	

Total Cases & Deaths by Race*† N = 39,421; Total Deaths n=521					
	Among all Cases	Among Deaths		Among all Cases	Among Deaths
<b>Asian</b>	<b>2,147 (5.45%)</b>	<b>41 (7.87%)</b>	<b>White</b>	<b>14,317 (36.32%)</b>	<b>279 (53.55%)</b>
Hispanic/Latino	17 (0.04%)	0 (0%)	Hispanic/Latino	5,466 (13.87%)	65 (12.48%)
Non-Hispanic/ Latino	1,689 (4.28%)	41 (7.87%)	Non-Hispanic/ Latino	7,590 (19.25%)	213 (40.88%)
Not Specified	441 (1.12%)	0 (0%)	Not Specified	1,261 (3.20%)	<5 (0.19%)
<b>Black</b>	<b>7,014 (17.79%)</b>	<b>136 (26.10%)</b>	<b>Other</b>	<b>3,514 (8.19%)</b>	<b>60 (11.52%)</b>
Hispanic/Latino	176 (0.45%)	<5 (0.19%)	Hispanic/Latino	2,365 (6.00%)	56 (10.75%)
Non-Hispanic/ Latino	5,948 (15.09%)	135 (25.91%)	Non-Hispanic/ Latino	465 (1.18%)	<5 (0.58%)
Not Specified	890 (2.26%)	0 (0%)	Not Specified	684 (1.74%)	<5 (0.19%)
<b>Native Hawaiian/Pacific Islander</b>	<b>51 (0.13%)</b>	<b>&lt;5 (0.38%)</b>	<b>Unknown</b>	<b>12,334 (31.29%)</b>	<b>&lt;5 (0.58%)</b>
Hispanic/Latino	12 (0.03%)	0 (0%)	Hispanic/Latino	1,969 (4.99%)	<5 (0.19%)
Non-Hispanic/ Latino	31 (0.08%)	<5 (0.38%)	Non-Hispanic/ Latino	510 (1.29%)	<5 (0.38%)
Not Specified	8 (0.02%)	0 (0%)	Not Specified	9,855 (25.00%)	0 (0%)
<b>American Indian/Alaskan Native</b>	<b>44 (0.11%)</b>	<b>0 (0%)</b>	*Data Source: GA DPH, State Electronic Disease Surveillance System **Among patients with underlying conditions information available Note: All data is provisional as data reporting, investigation, cleaning, and validating is ongoing. † Represents total confirmed and presumptive cases		
Hispanic/Latino	8 (0.02%)	0 (0%)			
Non-Hispanic/Latino	25 (0.06%)	0 (0%)			
Not Specified	11 (0.03%)	0 (0%)			

Confirmed cases are those tested using Molecular Tests (i.e. PCR).  
Presumptive Cases are those tested using Antigen Tests.

# Epidemiology Overview for Newton County

## COVID-19 Snapshot, data as of 9am November 30, 2020

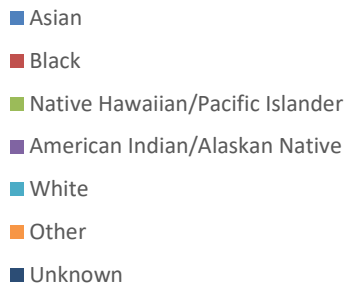


Provided here is a detailed look at the activities of the Epidemiology Program in Newton County, one of three counties represented in district 3-4. Newton county's population is 111, 744 and makes up 9.8% of residents within the district.

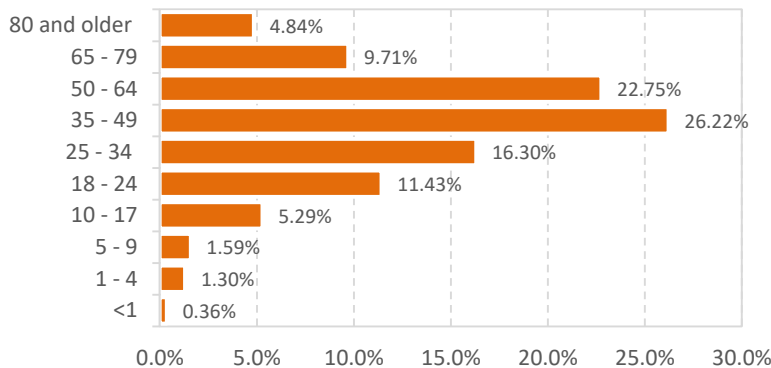
In Newton County there has been a 4.8% increase in newly confirmed COVID-19 Cases between the week of 11/16/20 – 11/23/20 (n=3,665) and 11/23/20 – 11/30/20 (n=3,841).

COVID-19 Cases & Deaths*				
	Confirmed Cases	Presumptive Cases	Total Cases†	Total Deaths†
Outbreak	329	34	363	54
Total	3,356	485	3,841	108
Illness Characteristics*† N=3,841; n=108				
	Among all Cases		Among Deaths	
Gender				
	Male	1,636 (43%)		48 (44%)
	Female	2,156 (56%)		60 (55%)
Median Age (years)		43		79
Age range (years)		0 – 100		21 - 98
Total Hospitalizations		348 (9%)		59 (55%)
Total with Underlying Conditions		842 (60%)**		54 (96%)**
Underlying Conditions unknown		2,434		52

### Race Distribution of Cases in Newton County



### Age Distribution of Cases for Newton County



Total Cases & Deaths by Race*† N = 3,841; Total Deaths n=108					
	Among all Cases	Among Deaths		Among all Cases	Among Deaths
Asian	24 (0.62%)	0 (0%)	White	1,352 (35.20%)	70 (64.81%)
Hispanic/Latino	0 (0%)	0 (0%)	Hispanic/Latino	160 (4.17%)	<5 (0.93%)
Non-Hispanic/ Latino	20 (0.52%)	0 (0%)	Non-Hispanic/ Latino	1,079 (28.09%)	69 (63.89%)
Not Specified	<5 (0.10%)	0 (0%)	Not Specified	113 (2.94%)	0 (0%)
Black	1,665 (43.35%)	37 (34.26%)	Other	99 (2.58%)	0 (0%)
Hispanic/Latino	15 (0.39%)	0 (0%)	Hispanic/Latino	50 (1.30%)	0 (0%)
Non-Hispanic/ Latino	1,432 (37.28%)	37 (34.26%)	Non-Hispanic/ Latino	14 (0.36%)	0 (0%)
Not Specified	218 (5.68%)	0 (0%)	Not Specified	35 (0.91%)	0 (0%)
Native Hawaiian/Pacific Islander	0 (0%)	0 (0%)	Unknown	697 (18.15%)	0 (0%)
Hispanic/Latino	0 (0%)	0 (0%)	Hispanic/Latino	36 (0.94%)	0 (0%)
Non-Hispanic/ Latino	0 (0%)	0 (0%)	Non-Hispanic/ Latino	72 (1.87%)	0 (0%)
Not Specified	0 (0%)	0 (0%)	Not Specified	589 (15.33%)	0 (0%)
American Indian/Alaskan Native	4 (0.10%)	<5 (0.93%)	*Data Source: GA DPH, State Electronic Disease Surveillance System **Among patients with underlying conditions information available		
Hispanic/Latino	0 (0%)	0 (0%)	Note: All data is provisional as data reporting, investigation, cleaning, and validating is ongoing.		
Non-Hispanic/Latino	<5 (0.05%)	<5 (0.93%)	† = Represents total confirmed and presumptive cases		
Not Specified	<5 (0.05%)	0 (0%)			

\*Data Source: GA DPH, State Electronic Disease Surveillance System

\*\*Among patients with underlying conditions information available

Note: All data is provisional as data reporting, investigation, cleaning, and validating is ongoing.

† = Represents total confirmed and presumptive cases

Confirmed cases are those tested using Molecular Tests (i.e. PCR).

Presumptive Cases are those tested using Antigen Tests.

# Epidemiology Overview for Rockdale County



## COVID-19 Snapshot, data as of 9am November 30, 2020

Provided here is a detailed look at the activities of the Epidemiology Program in Rockdale County, one of three counties represented in district 3-4. Rockdale county's population is 90, 896 and makes up 7.9% of residents within the district.

In Rockdale County there has been a 5.7% increase in newly confirmed COVID-19 Cases between the week of **11/16/2020 – 11/23/2020 (n=2,611)** and **11/23/2020 – 11/30/2020 (n=2,760)**.

### COVID-19 Cases & Deaths\*

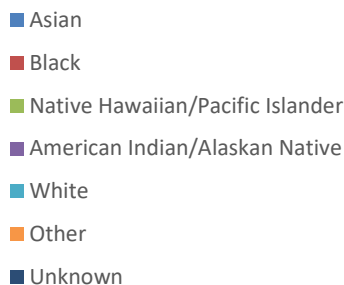
	Confirmed Cases	Presumptive Cases	Total Cases†	Total Deaths†
Outbreak	175	5	180	12
Total	2,561	199	2,760	57

### Illness Characteristics\*† N=2,760 n=57

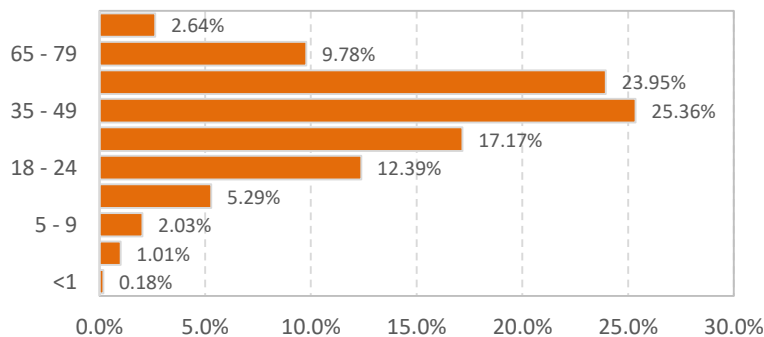
#### Among all Cases Among Deaths

<b>Gender</b>		
Male	1,205 (44%)	27 (47%)
Female	1,512 (55%)	30 (53%)
<b>Median Age (years)</b>	42	71
<b>Age range (years)</b>	0 – 100	27 – 100
Total Hospitalizations	354 (13%)	41 (72%)
Total with Underlying Conditions	713 (65%)**	42 (100%)**
Underlying Conditions unknown	1,656	15

## Race Distribution of Cases in Rockdale County



## Age Distribution of Cases for Rockdale County



### Total Cases & Deaths by Race\*† N = 2,760 Total Deaths n=57

	Among all Cases	Among Deaths		Among all Cases	Among Deaths
<b>Asian</b>	<b>34 (1.23%)</b>	<b>0 (0%)</b>	<b>White</b>	<b>691 (25.04%)</b>	<b>22 (38.60%)</b>
Hispanic/Latino	0 (0%)	0 (0%)	Hispanic/Latino	185 (6.70%)	<5 (5.26%)
Non-Hispanic/ Latino	25 (0.91%)	0 (0%)	Non-Hispanic/ Latino	417 (15.11%)	19 (33.33%)
Not Specified	9 (0.33%)	0 (0%)	Not Specified	89 (3.22%)	0 (0%)
<b>Black</b>	<b>1,439 (52.14%)</b>	<b>32 (56.14%)</b>	<b>Other</b>	<b>113 (4.09%)</b>	<b>&lt;5 (1.75%)</b>
Hispanic/Latino	13 (0.47%)	0 (0%)	Hispanic/Latino	55 (1.99%)	<5 (1.75%)
Non-Hispanic/ Latino	1,209 (43.80%)	31 (54.39%)	Non-Hispanic/ Latino	27 (0.98%)	0 (0%)
Not Specified	217 (7.86%)	<5 (1.75%)	Not Specified	31 (1.12%)	0 (0%)
<b>Native Hawaiian/Pacific Islander</b>	<b>&lt;5 (0.07%)</b>	<b>0 (0%)</b>	<b>Unknown</b>	<b>476 (17.25%)</b>	<b>&lt;5 (1.75%)</b>
Hispanic/Latino	0 (0%)	0 (0%)	Hispanic/Latino	43 (1.56%)	0 (0%)
Non-Hispanic/ Latino	<5 (0.07%)	0 (0%)	Non-Hispanic/ Latino	40 (1.45%)	0 (0%)
Not Specified	0 (0%)	0 (0%)	Not Specified	393 (14.24%)	<5 (1.75%)
<b>American Indian/Alaskan Native</b>	<b>5 (0.18%)</b>	<b>&lt;5 (1.75%)</b>	*Data Source: GA DPH, State Electronic Disease Surveillance System		
Hispanic/Latino	<5 (0.04%)	0 (0%)	**Among patients with underlying conditions information available		
Non-Hispanic/Latino	<5 (0.14%)	<5 (1.75%)	Note: All data is provisional as data reporting, investigation, cleaning, and validating is ongoing.		
Not Specified	0 (0%)	0 (0%)	† Represents total confirmed and presumptive cases		

Confirmed cases are those tested using Molecular Tests (i.e. PCR).  
Presumptive Cases are those tested using Antigen Tests.